



JOHN STREET, BLOOMSBURY, LONDON WC1N 2BL

*£1,500,000* SUBJECT TO CONTRACT

› LEASEHOLD › 2 Bedrooms › 2 bathrooms › Roof terrace

TAVISTOCKBOW

RESIDENTIAL



- › Lateral Apartment
- › Two Bedrooms
- › Two Bathrooms
- › Third Floor
- › 958 sqft. (approx.)
- › Roof Terrace
- › High Specification
- › Integrated Audio System
- › Passenger Lift
- › Day Porter



A fantastic new development of light filled lateral apartments situated within Grade II listed Art Deco building located on one of Bloomsbury's most attractive tree-lined streets.

All apartments feature either a double or triple aspect and benefit from a high level of finish including integrated audio systems, high specification kitchens with composite work surfaces, luxury bathrooms and bespoke joinery throughout.







### WHAT WE LOVE

Handsome 1930's Art Deco Building  
Great natural light  
One of Bloomsbury's prettiest streets  
Super roof terrace  
Quiet City fringe location

### WHAT YOU NEED TO KNOW

Easy access to both the West End and City  
Building served by a day porter  
Within easy reach of Chancery Lane Tube  
Brunswick Centre is close by  
Short stroll to Lambs Conduit Street

#### Price:

£1,500,000 SUBJECT TO CONTRACT

#### Leasehold Term:

125 years approx.

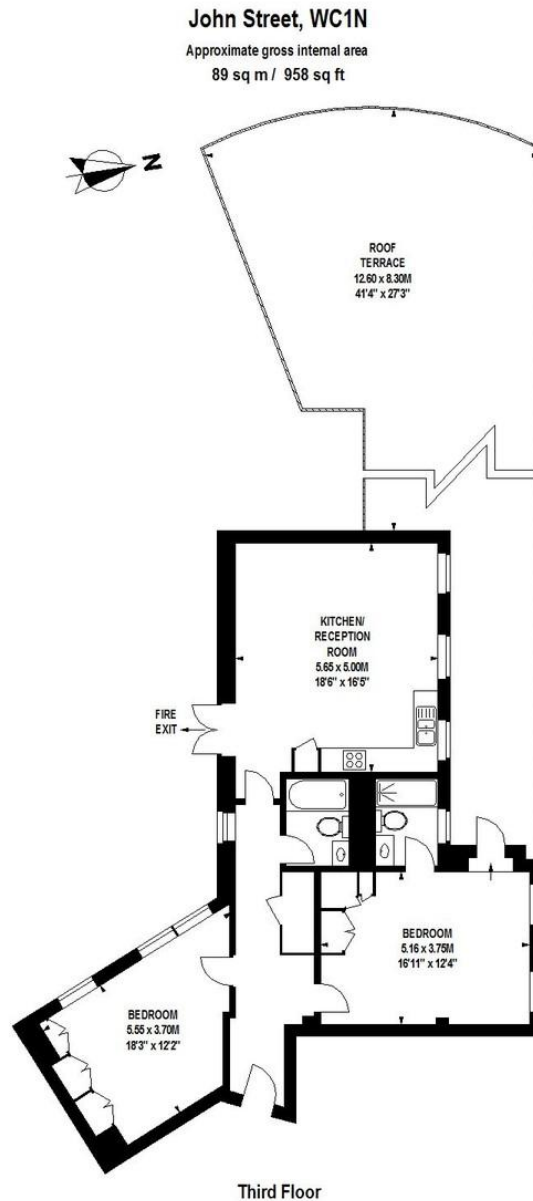
#### Service Charge (2014):

£2557.91 per annum

#### Ground Rent (2014):

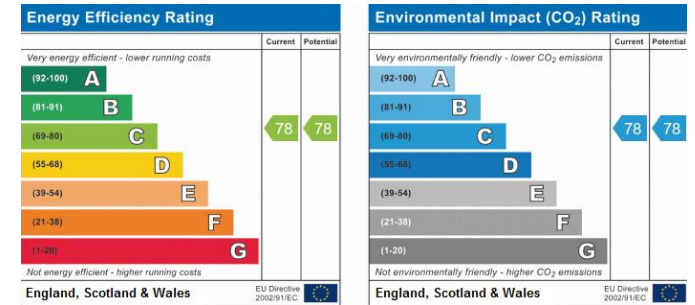
£500.00 per annum

# Floorplan



Floor Plan produced for Tavistock Bow by Mays Floorplans ©. Tel 020 3397 4594  
Illustration for identification purposes only, not to scale  
All measurements are maximum, and include wardrobes and window bays where applicable

# EPC



## About Us

Tavistock Bow is an independent residential agency based in Covent Garden. We are niche, boutique, creative, knowledgeable, professional and approachable. We love what we do and that's why we do it.

## Contact Us

- a.** 8 Tavistock Street, London WC2E 7PP
- t.** 020 3757 9313
- e.** hello@tavistockbow.com
- w.** tavistockbow.com

