

Slingsby Place, Covent Garden, WC2E 9AB
£1,400 pw

› 3 Bedrooms › 3 Bathroom › Unfurnished

TAVISTOCKBOW
RESIDENTIAL



- › Three bedrooms
- › Three bathrooms
- › Duplex (3rd and 4th floors)
- › Private terrace & winter garden
- › Lift
- › Unfurnished
- › Professionally managed
- › 24 security (not porter)
- › Available immediately
- › Approx 200m from Covent Garden tube

› This three bedroom, three bathroom penthouse is located within a fantastic development in St Martin's Courtyard. Split over the 3rd & 4th floors (with lift) the bedrooms are located on the 3rd floor with the master bedroom benefiting from a "winter garden" and en-suite shower room. The open plan L-shaped kitchen / reception room is located upstairs with a private terrace leading off from the reception area. Available immediately, unfurnished. Westminster council tax - Band G.





WHAT WE LOVE

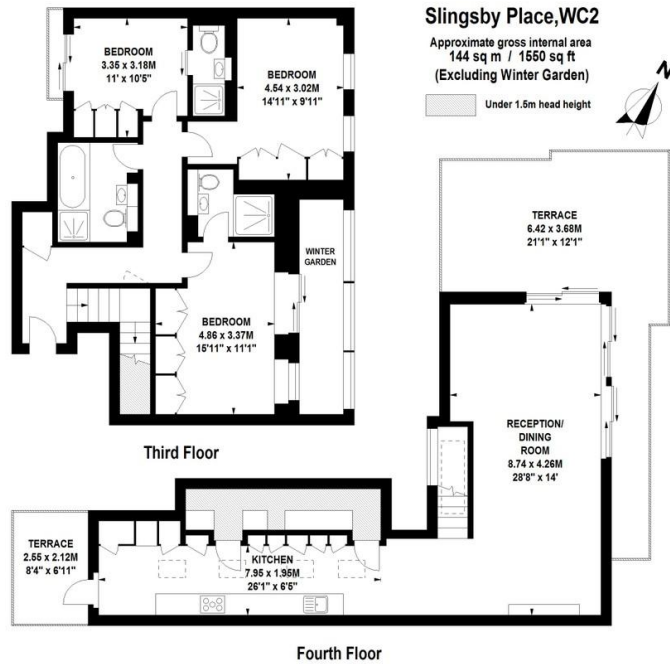
Large bedrooms
2 Terraces (indoor and outdoor)
Duplex
Next to favourite wine bar 'Dalla Terra'
Fantastic location.

WHAT YOU NEED TO KNOW

24 hour security (not porter)
Professionally managed
Luxury appliances
3rd floor (with lift)
Wood floors throughout.

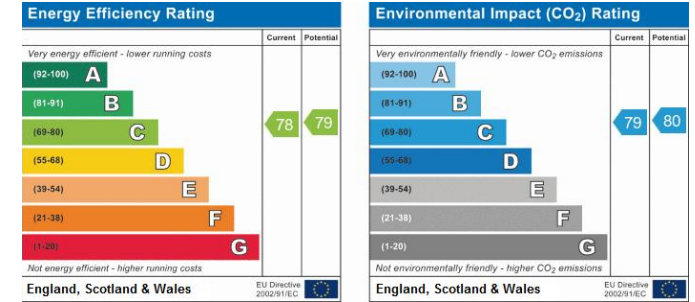


Floorplan



Floor Plan produced for Tavistock Bow by Mays Floorplans ©. Tel 020 3397 4594
 Illustration for identification purposes only, not to scale
 All measurements are maximum, and include wardrobes and window bays where applicable

EPC



About Us

Tavistock Bow is an independent residential agency based in Covent Garden. We are niche, boutique, creative, knowledgeable, professional and approachable. We love what we do and that's why we do it.

Contact Us

- a.** 31 Long Acre, London, WC2E 9LA
- t.** 020 7477 2177
- e.** hello@tavistockbow.com
- w.** tavistockbow.com

-  /tavistockbow
-  /tavistockbow
-  @tavistockbow