



Duck Lane, Soho *£475 pw*

› 1 Bedroom › 1 Bathroom › Unfurnished

TAVISTOCKBOW
RESIDENTIAL



- › One bedroom
- › One bathroom
- › 2nd floor
- › No lift
- › Wooden flooring throughout
- › Unfurnished
- › Available immediately
- › Period building
- › Secondary glazing
- › En-suite shower room



A stunning newly refurbished one bedroom flat to rent in Soho, moments from Alan Yau's Duck & Rice restaurant. Situated on the second floor, this one bedroom flat has been meticulously refurbished throughout. The double bedroom boasts fitted storage

and an en-suite shower room, whilst the modern kitchen is open plan to the kitchen. Available immediately on an unfurnished basis.

WHAT WE LOVE

Modern kitchen
Rainfall shower





Well proportioned rooms
Newly refurbished
Close to 'Duck and Rice'.

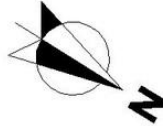
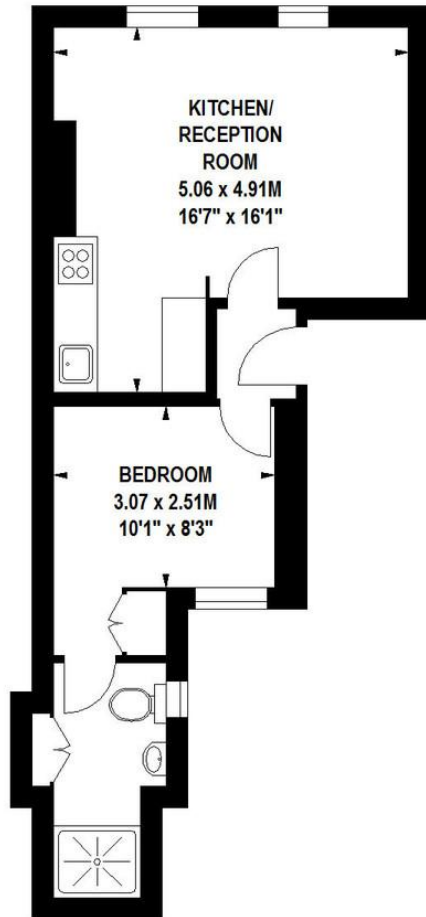
WHAT YOU NEED TO KNOW

Has a dishwasher
Available immediately
No lift
Wooden floors throughout
Secondary glazing.

Floorplan

Duck Lane, W1F

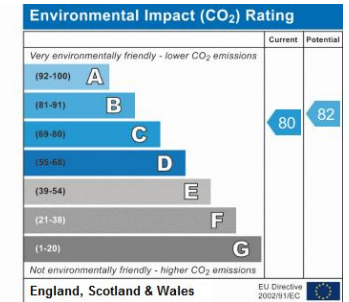
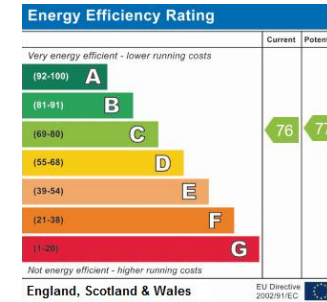
Approximate gross internal area
37 sq m / 398 sq ft



Second Floor

Floor Plan produced for Tavistock Bow by Mays Floorplans © . Tel 020 3397 4594
Illustration for identification purposes only, not to scale
All measurements are maximum, and include wardrobes and window bays where applicable

EPC



About Us

Tavistock Bow is an independent residential agency based in Covent Garden. We are niche, boutique, creative, knowledgeable, professional and approachable. We love what we do and that's why we do it.

Contact Us

- a.** 75 Shelton Street, London, WC2H 9JQ
- t.** 020 7477 2177
- e.** hello@tavistockbow.com
- w.** tavistockbow.com

-  /tavistockbow
-  /tavistockbow
-  @tavistockbow



TAVISTOCKBOW
RESIDENTIAL