



Charing Cross Mansions, Charing Cross Road, Covent Garden, WC2H 0DH  
*£425 pw*

› 1 Bedroom › 1 Bathroom › Furnished

**TAVISTOCKBOW**  
RESIDENTIAL





- › One bedroom
- › Second floor
- › Period mansion block
- › Carpets throughout (except kitchen and bathroom)
- › Separate kitchen
- › Furnished
- › 100mb Fibre Broadband included in rent
- › Great location
- › Available beginning of March
- › Seconds from Leicester Square tube



A great one-bedroom apartment (with 100mb Fibre Broadband included in rent) situated on the second floor (walk-up) of a very well-maintained period mansion block close to Leicester Square & Covent Garden. The flat has high ceilings with a separate

kitchen, good size reception room, double bedroom and bathroom. The apartment is available on a furnished basis at the start of March 2018. Internet is included in rent, Westminster council tax band D. Photos are indicative of another flat in the building.





**WHAT WE LOVE:**

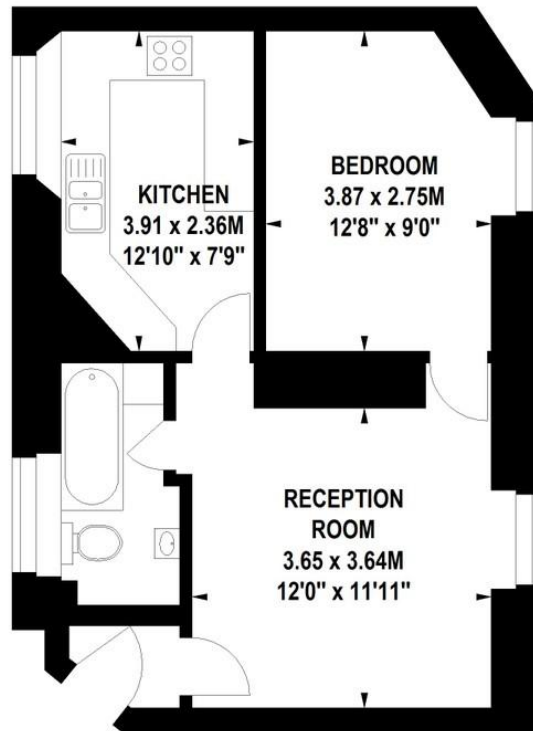
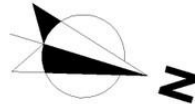
- Lovely mansion block
- Great size
- High ceilings
- Utility room
- Period features.

**WHAT YOU NEED TO KNOW:**

- Walk up
- Carpets throughout (except kitchen and bathroom)
- Second floor
- Dishwasher
- Close to Leicester Square tube.

# Charing Cross Mansions, WC2

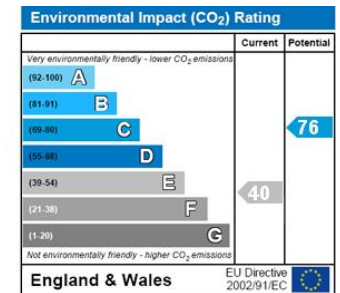
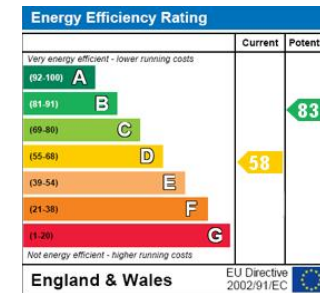
Approximate gross internal area  
43 sq m / 463 sq ft



**Fourth Floor**

Floor Plan produced for Tavistock Bow by Mays Floorplans © . Tel 020 3397 4594  
Illustration for identification purposes only, not to scale  
All measurements are maximum, and include wardrobes and window bays where applicable

## EPC



## About Us

Tavistock Bow is an independent residential agency based in Covent Garden. We are niche, boutique, creative, knowledgeable, professional and approachable. We love what we do and that's why we do it.

## Contact Us

- a.** 31 Long Acre, London, WC2E 9LA
- t.** 020 7477 2177
- e.** hello@tavistockbow.com
- w.** tavistockbow.com



**TAVISTOCKBOW**  
RESIDENTIAL