



## St Martin's Lane, Covent Garden *£1,200 pw*

› 2 Bedrooms › 2 Bathroom › Unfurnished

**TAVISTOCKBOW**  
RESIDENTIAL



- > Two bedrooms
- > Two bathrooms
- > Fourth floor (with lift)
- > Newly refurbished
- > Walk in wardrobes
- > Unfurnished
- > Two terraces
- > Quiet location
- > Available immediately
- > Close to Leicester Square underground

> An incredible opportunity to rent a two bedroom, two bathroom penthouse duplex flat. Situated on the 4th floor (with lift) the property features a large open plan reception/kitchen which benefits from a balcony with bi-fold doors. Upstairs leads to a large terrace and downstairs leads to two large bedrooms with both featuring walk in wardrobes and en-suite bathrooms. The master bathroom features 'his and hers' sinks a classic bathtub and a dual shower stall. Available immediately, unfurnished.





**WHAT WE LOVE:**

Incredible roof top terrace  
Moments from Covent Garden Piazza  
Close to 'Mr Foggs Tavern'  
Cast iron radiators  
Master ensuite is fabulous.

**WHAT YOU NEED TO KNOW:**

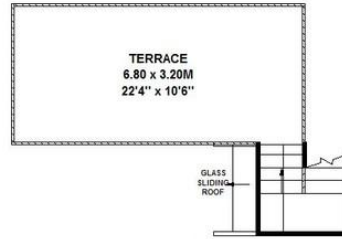
Two terraces  
Amazing storage  
Modern appliances  
'His and her' sinks  
Stunning bathtub.



# Floorplan

## St. Martin's Lane, WC2

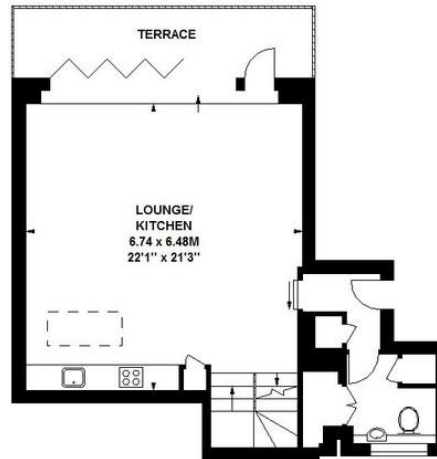
Approximate gross internal area  
147 sq m / 1582 sq ft



Fifth Floor



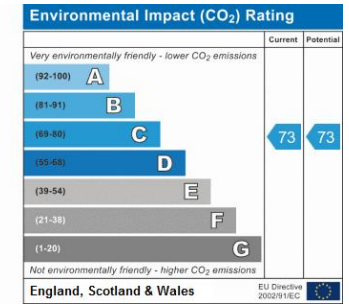
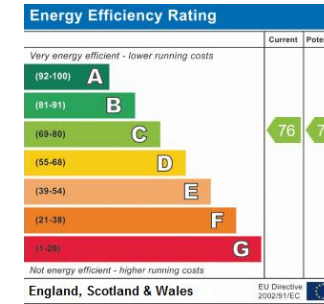
Third Floor



Fourth Floor

Floor Plan produced for Tavistock Bow by Mays Floorplans ©. Tel 020 3397 4594  
Illustration for identification purposes only, not to scale  
All measurements are maximum, and include wardrobes and window bays where applicable

# EPC



## About Us

Tavistock Bow is an independent residential agency based in Covent Garden. We are niche, boutique, creative, knowledgeable, professional and approachable. We love what we do and that's why we do it.

## Contact Us

- a.** 75 Shelton Street, London, WC2H 9JQ
- t.** 020 7477 2177
- e.** hello@tavistockbow.com
- w.** tavistockbow.com



**TAVISTOCKBOW**  
RESIDENTIAL