

Charing Cross Mansions, Charing Cross Road, Covent Garden, WC2H 0DH  
*£450 pw*

› 1 Bedroom › 1 Bathroom › Furnished

**TAVISTOCKBOW**  
RESIDENTIAL





- › One bedroom
- › One bathroom
- › First floor (no lift)
- › Separate kitchen
- › Great location
- › Unfurnished
- › 100mb Fibre Broadband included in rent
- › Good size
- › Available mid-April
- › Close to Leicester Square and Covent Garden stations



A great one bedroom flat (with 100mb Fibre Broadband included in rent) situated on the first floor of a very well-maintained period mansion block close to Leicester Square & Covent Garden. The flat has high ceilings with a separate kitchen, good size reception

room, double bedroom and bathroom. The apartment is available from mid-April, furnished. Westminster Council - Tax Band tbc. Photos are indicative of another property in the building.



**WHAT WE LOVE:**

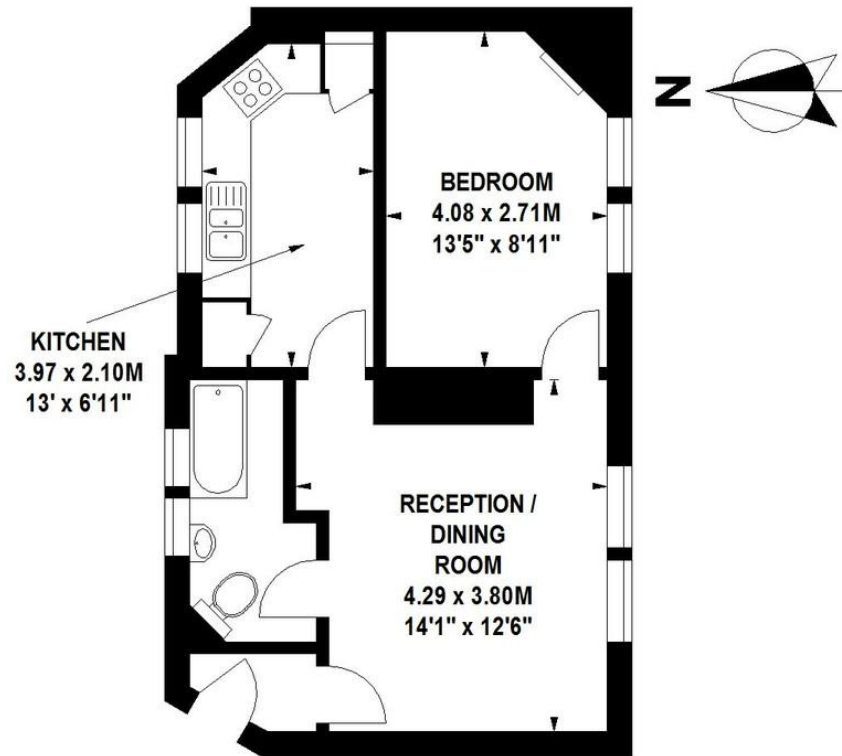
Amazing mansion block  
High ceilings  
Good size rooms  
Separate kitchen  
Overlooks St Martins Court.

**WHAT YOU NEED TO KNOW:**

Double sized bedroom  
1st Floor (no lift)  
Dishwasher  
Washer dryer  
Close to Leicester Square tube.

## Charing Cross Road, WC2

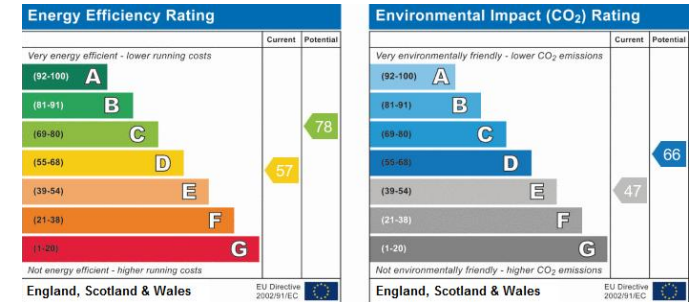
Approximate Gross Internal Area 42.5 sq m / 457 sq ft



**First Floor**

Floor Plan produced for Tavistock Bow by Mays Floorplans © . Tel 020 3397 4594  
 Illustration for identification purposes only, not to scale  
 All measurements are maximum, and include wardrobes and window bays where applicable

## EPC




## About Us

Tavistock Bow is an independent residential agency based in Covent Garden. We are niche, boutique, creative, knowledgeable, professional and approachable. We love what we do and that's why we do it.

## Contact Us

- a.** 31 Long Acre, London, WC2E 9LA
- t.** 020 7477 2177
- e.** hello@tavistockbow.com
- w.** tavistockbow.com

-  /tavistockbow
-  /tavistockbow
-  @tavistockbow