



Catherine Street, Covent Garden, London WC2B 5JA  
*£455 pw*

› 1 Bedroom    › 1 Bathroom    › Unfurnished

**TAVISTOCKBOW**  
RESIDENTIAL



- › One bedroom
- › Modern bathroom
- › Open plan kitchen reception room
- › Ideal pied a terre
- › Wood floors
- › Unfurnished
- › Available immediately
- › Located in the Opera Quarter
- › Moments from Piazza
- › Close to Covent Garden tube station

› A modern one bedroom flat on the second floor of a period building located within the ever popular Opera Quarter in Covent Garden. There is a modern open plan kitchen reception room, shower room and double bedroom with built in wardrobes. There are wooden floors throughout except tiles in bathroom. The flat comes unfurnished, Council tax - band TBC.





#### WHAT WE LOVE:

Very bright  
Excellent location  
Modern appliances  
Theatreland  
Amazing restaurants close by.

#### WHAT YOU NEED TO KNOW:

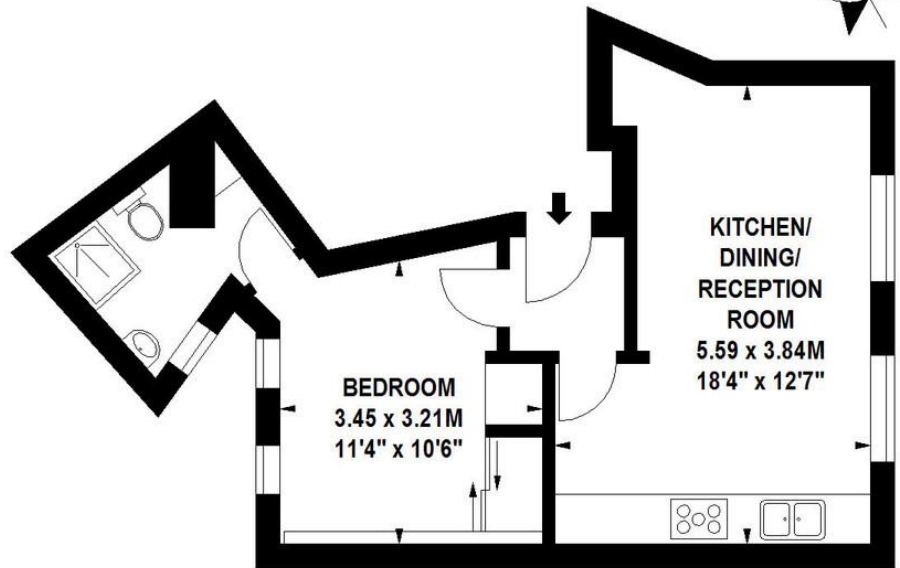
Bedroom to the rear  
Bedroom is small  
Built in storage  
Secondary glazing  
Second floor, walk up.



## Catherine Street, WC2B

Approximate gross internal area

36 sq m / 388 sq ft



### Second Floor

**BEDROOM**  
3.45 x 3.21M  
11'4" x 10'6"

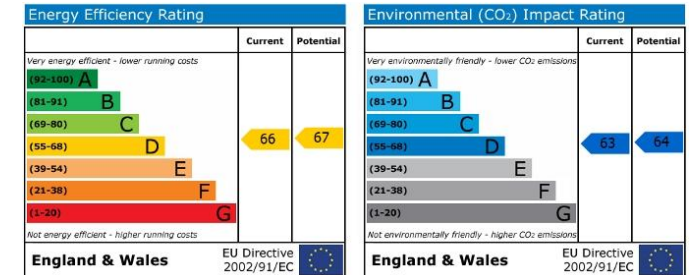
**KITCHEN/  
DINING/  
RECEPTION  
ROOM**  
5.59 x 3.84M  
18'4" x 12'7"

Floor Plan produced for Tavistock Bow by Mays Floorplans © . Tel 020 3397 4594

Illustration for identification purposes only, not to scale

All measurements are maximum, and include wardrobes and window bays where applicable

## EPC



## About Us

Tavistock Bow is an independent residential agency based in Covent Garden. We are niche, boutique, creative, knowledgeable, professional and approachable. We love what we do and that's why we do it.

## Contact Us

- a.** 8 Tavistock Street, London WC2E 7PP
- t.** 020 7477 2177
- e.** hello@tavistockbow.com
- w.** tavistockbow.com

- /tavistockbow
- /tavistockbow
- @tavistockbow



**TAVISTOCKBOW**  
RESIDENTIAL