



St Martin's Lane, Covent Garden, WC2N 4AA  
*£550 pw*

› 1 Bedroom › 1 Bathroom › Unfurnished

TAVISTOCKBOW  
RESIDENTIAL



- › One bedroom
- › One shower room
- › Third floor
- › Lift access
- › Wood floors throughout
- › Unfurnished
- › Underfloor heating
- › Contemporary finish
- › Available immediately
- › Close to Leicester Square & Covent Garden



This recently refurbished one bedroom flat is situated on the third floor (with lift). The contemporary kitchen is open plan to the reception room with the double bedroom benefiting from fitted storage. There is modern shower room. Available immediately, unfurnished.





**WHAT WE LOVE:**

Sleek modern kitchen

A good size bedroom

Amazing location

Interior designed throughout

Close to St Martins Courtyard.

**WHAT YOU NEED TO KNOW:**

3rd floor with lift access

Apartments on the top two floors

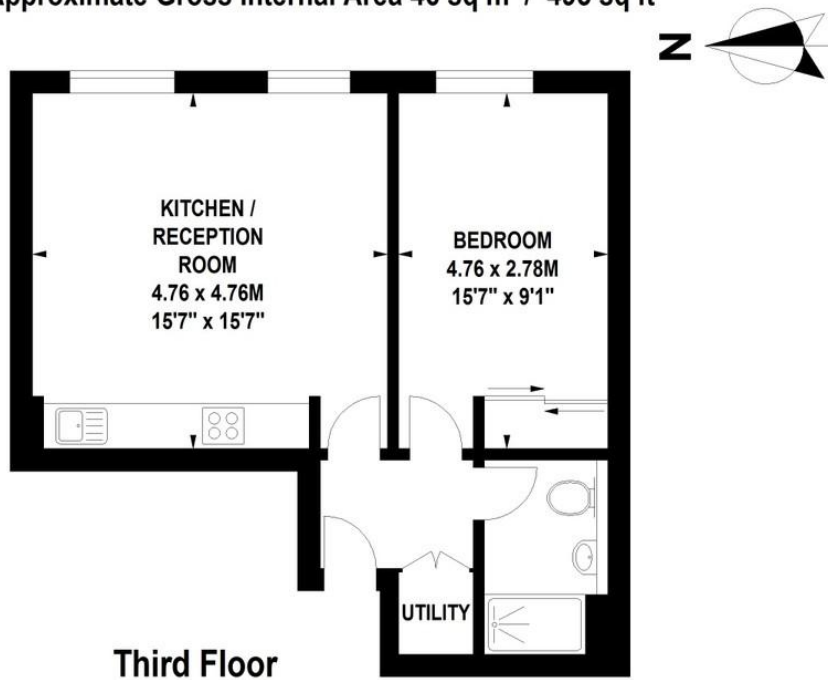
Efficient double glazing

Underfloor heating

Seconds from Leicester Square tube.

## St. Martins Lane, WC2

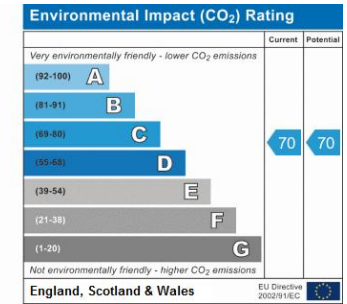
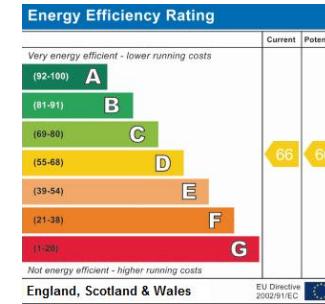
Approximate Gross Internal Area 46 sq m / 495 sq ft



Third Floor

Floor Plan produced for Tavistock Bow by Mays Floorplans © . Tel 020 3397 4594  
 Illustration for identification purposes only, not to scale  
 All measurements are maximum, and include wardrobes and window bays where applicable

## EPC



## About Us

Tavistock Bow is an independent residential agency based in Covent Garden. We are niche, boutique, creative, knowledgeable, professional and approachable. We love what we do and that's why we do it.

## Contact Us

- a.** 31 Long Acre, London, WC2E 9LA
- t.** 020 7477 2177
- e.** hello@tavistockbow.com
- w.** tavistockbow.com

