



Goodge Street, Fitzrovia, W1T 1TE
£495 pw

› Studio › 1 Bathroom › Unfurnished

TAVISTOCKBOW
RESIDENTIAL



- > Studio apartment
- > Shower room
- > Brand new
- > Separate sleeping area
- > 2nd floor (walk up)
- > Unfurnished
- > Wood floors
- > Contemporary finish
- > Available end of October
- > Close to Goodge Street & Tottenham Court Road Tube



A beautiful, brand new, contemporary, studio apartment in a fantastic Fitzrovia location close to Charlotte Street. The apartment is on the 2nd floor (walk up) and includes a modern studio room with open plan kitchen, separate sleeping area and a

stunning shower room. Available from the end of October on an unfurnished basis.





WHAT WE LOVE:

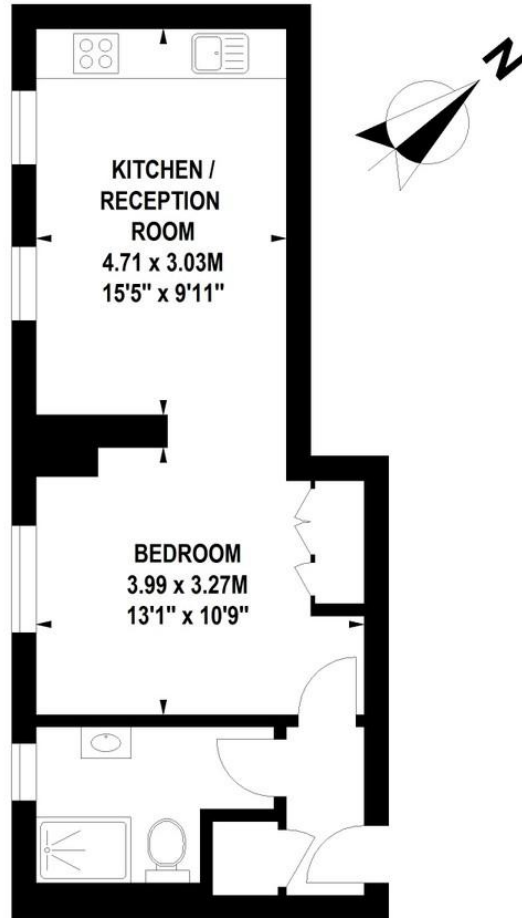
Brand new
Close to Charlotte Street and all its fantastic restaurants
Modern finish throughout
Just around the corner from the Charlotte Street Hotel.

WHAT YOU NEED TO KNOW:

2nd Floor (walk up)
Wood floors
Fitted wardrobe in the sleeping area
Open plan kitchen
Camden Council Tax.

Goodge Street, W1

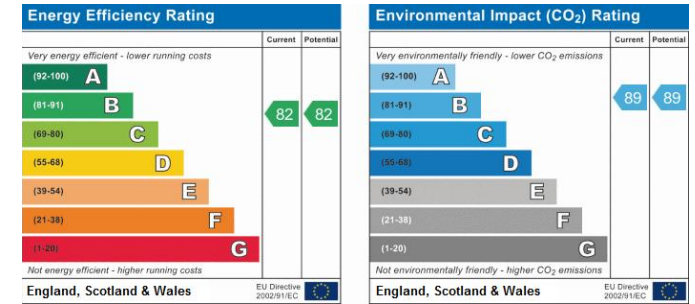
Approximate Gross Internal Area 37 sq m / 398 sq ft



Second Floor

Floor Plan produced for Tavistock Bow by Mays Floorplans © . Tel 020 3397 4594
 Illustration for identification purposes only, not to scale
 All measurements are maximum, and include wardrobes and window bays where applicable

EPC



About Us

Tavistock Bow is an independent residential agency based in Covent Garden. We are niche, boutique, creative, knowledgeable, professional and approachable. We love what we do and that's why we do it.

Contact Us

- a.** 31 Long Acre, London, WC2E 9LA
- t.** 020 7477 2177
- e.** hello@tavistockbow.com
- w.** tavistockbow.com

-  /tavistockbow
-  /tavistockbow
-  @tavistockbow