



Goode Street, Fitzrovia
£450 pw

› 0 › 1 Bathroom › Unfurnished

TAVISTOCKBOW
RESIDENTIAL



- › Studio apartment
- › Shower room
- › 2nd floor (walk up)
- › Brand new
- › Open plan kitchen
- › Unfurnished
- › Wood floors
- › Located at the rear of the building
- › Available end of October
- › Close to Goodge Street & Tottenham Court Road Tube



A stunning, brand new, studio apartment in central Fitzrovia. The apartment has been completely refurbished throughout and includes a good size, open plan studio room and beautiful modern shower room. Located on the 2nd floor (walk up) and at the rear of the

building the studio is available from the end of October on an unfurnished basis.

WHAT WE LOVE:

The modern sleek kitchen
The contemporary shower room
The lovely wood floors
The location - so many good

restaurants on your doorstep
Brand new.

WHAT YOU NEED TO KNOW:

2nd floor (walk up)
Located at the rear of the building
Open plan kitchen
Fitted wardrobe

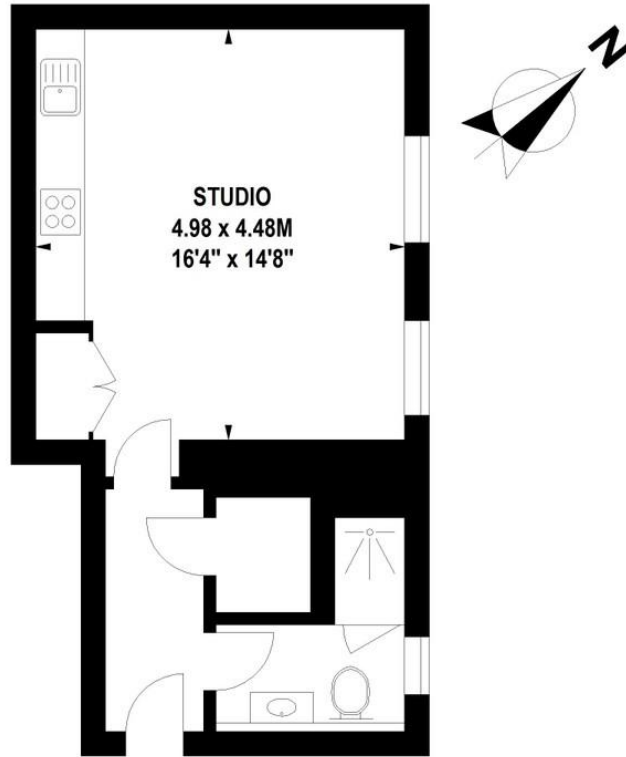




Westminster Council Tax.

Goodge Street, W1

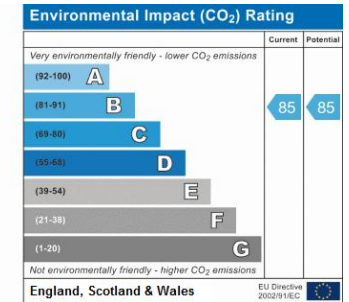
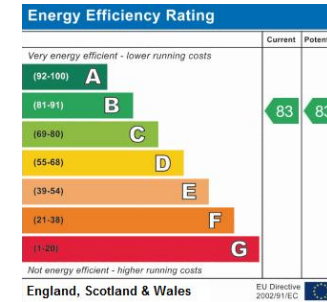
Approximate Gross Internal Area 35.5 sq m / 382 sq ft



Second Floor

Floor Plan produced for Tavistock Bow by Mays Floorplans © . Tel 020 3397 4594
 Illustration for identification purposes only, not to scale
 All measurements are maximum, and include wardrobes and window bays where applicable

EPC



About Us

Tavistock Bow is an independent residential agency based in Covent Garden. We are niche, boutique, creative, knowledgeable, professional and approachable. We love what we do and that's why we do it.

Contact Us

- a.** 31 Long Acre, London, WC2E 9LA
- t.** 020 7477 2177
- e.** hello@tavistockbow.com
- w.** tavistockbow.com

-  /tavistockbow
-  /tavistockbow
-  @tavistockbow