



William IV Street, Covent Garden, WC2N 4DD
£525 pw

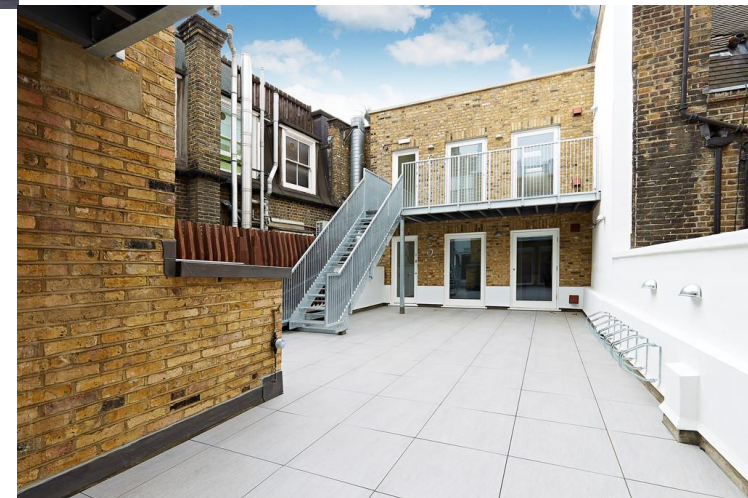
› 1 Bedroom › 1 Bathroom › Unfurnished

TAVISTOCKBOW
RESIDENTIAL



- › One large bedroom
- › One shower room
- › Open plan kitchen/ reception
- › Enclosed communal roof terrace
- › Second floor (no lift)
- › Unfurnished
- › Recently refurbished throughout
- › Built in Storage
- › Available immediately (or as late as November 2020)
- › Close to Charing Cross & Leicester Square station

› A recently refurbished one bedroom apartment situated on the second floor (no lift) of a lovely period building only moments from Trafalgar Square. Finished to a high standard, this property comprises a spacious living room opening onto a large communal enclosed roof terrace, a modern open-plan fully fitted kitchen, double bedroom with built-in storage and a luxury shower room. Available immediately, unfurnished.





WHAT WE LOVE:

- Large enclosed communal roof terrace
- Next door to the amazing Bancone - fantastic pasta
- Newly open Nutmeg is just around the corner
- Contemporary finish throughout
- Lots of natural light

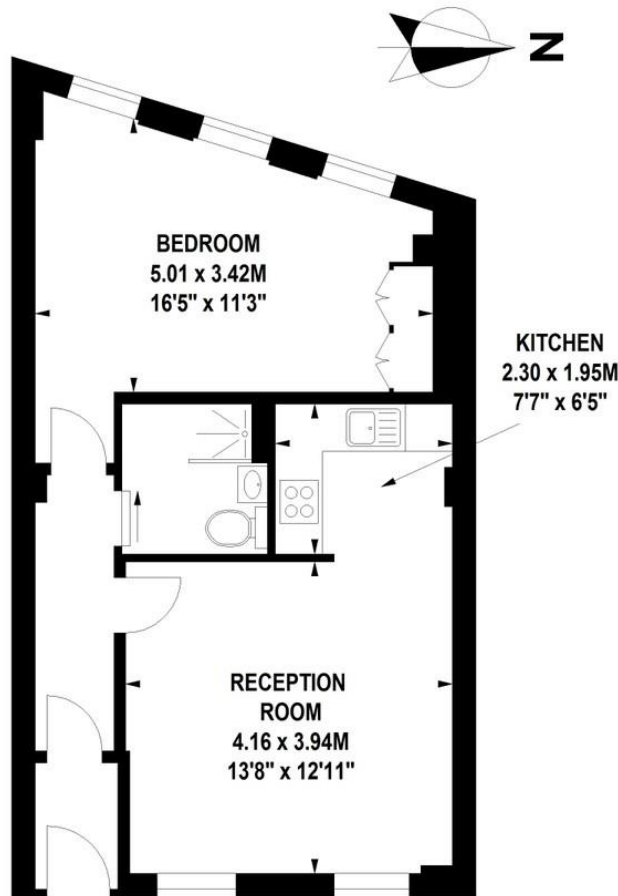
WHAT YOU NEED TO KNOW:

- Walk-up (2nd floor)
- Wood floors throughout
- Dishwasher and washer dryer
- Westminster Council Tax
- Professionally managed



William IV Street, WC2

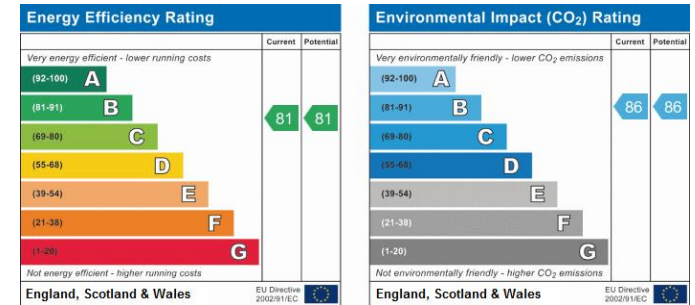
Approximate Gross Internal Area 48 sq m / 517 sq ft



First Floor

Floor Plan produced for Tavistock Bow by Mays Floorplans ©. Tel 020 3397 4594
Illustration for identification purposes only, not to scale
All measurements are maximum, and include wardrobes and window bays where applicable

EPC



About Us

Tavistock Bow is an independent residential agency based in Covent Garden. We are niche, boutique, creative, knowledgeable, professional and approachable. We love what we do and that's why we do it.

Contact Us

- a.** 31 Long Acre, London, WC2E 9LA
- t.** 020 7477 2177
- e.** hello@tavistockbow.com
- w.** tavistockbow.com

