



Drury Lane, Covent Garden, WC2B 5QF
£415 pw

› 1 Bedroom › 1 Bathroom › Unfurnished

TAVISTOCKBOW
RESIDENTIAL



- › One bedroom
- › One shower room
- › First floor
- › Wood floors throughout
- › Bright apartment
- › Unfurnished
- › Quiet bedroom
- › Available end of July
- › Dual aspect reception room
- › Close to Holborn & Covent Garden tube



A good size, first floor, one bedroom apartment in a central location. The apartment has a bright double aspect reception room with views down Drury Lane. The bedroom is quiet at the rear of the building and there is an open plan fully fitted kitchen and shower room.

Available from the end of July, unfurnished.





WHAT WE LOVE:

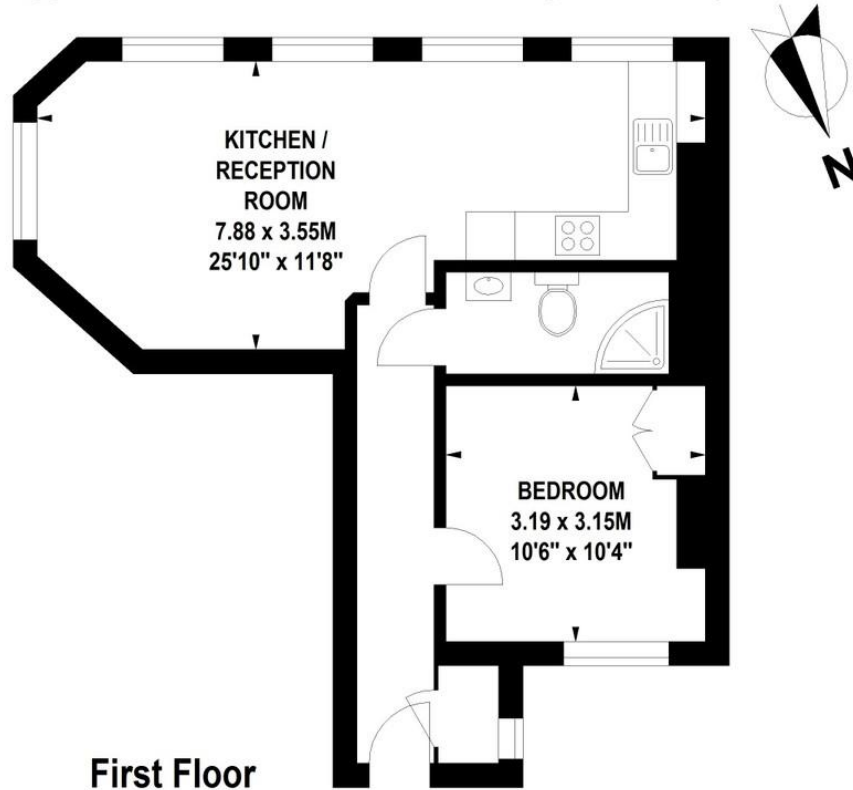
A short walk from tranquil Lincolns Inn Fields
Covent Garden's Piazza is close by
Bright dual aspect reception room
Above a lovely organic cafe
Many excellent restaurants close by.

WHAT YOU NEED TO KNOW:

First floor (walk up)
Shower room (no bath)
Open plan kitchen
Bedroom located to the rear of the building
Closest tube is Holborn.

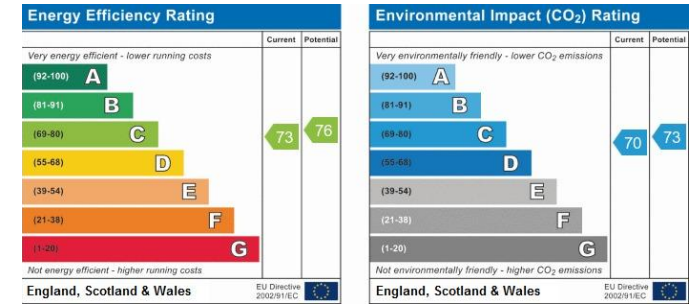
Drury Lane, WC2

Approximate Gross Internal Area 45 sq m / 484 sq ft



Floor Plan produced for Tavistock Bow by Mays Floorplans © . Tel 020 3397 4594
Illustration for identification purposes only, not to scale
All measurements are maximum, and include wardrobes and window bays where applicable

EPC



About Us

Tavistock Bow is an independent residential agency based in Covent Garden. We are niche, boutique, creative, knowledgeable, professional and approachable. We love what we do and that's why we do it.

Contact Us

- a.** 31 Long Acre, London, WC2E 9LA
- t.** 020 7477 2177
- e.** hello@tavistockbow.com
- w.** tavistockbow.com

