



Berwick Street, Soho, W1F  
*£340 pw*

> Studio > 1 Bathroom > Unfurnished

TAVISTOCKBOW  
RESIDENTIAL



- > Studio
- > One bathroom
- > 3rd floor (no lift)
- > Wood flooring
- > Double glazing
- > Unfurnished
- > Opposite Duck & Rice
- > Good storage
- > Available immediately
- > Close to Piccadilly Circus tube

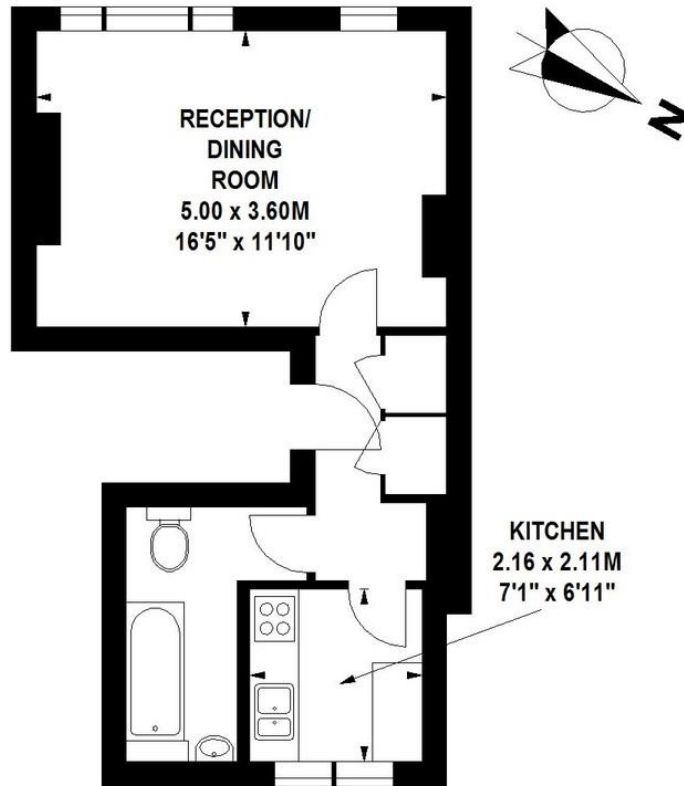
Recently redecorated throughout, this studio flat to rent in Soho is situated on the 3rd floor (no lift). The good sized living space overlooks Berwick Street with the double glazed windows providing plenty of natural light. Positioned off the hallway, the separate kitchen is situated at the rear of the property making this the ideal studio / living space. The



# Floorplan

## Berwick Street, W1F

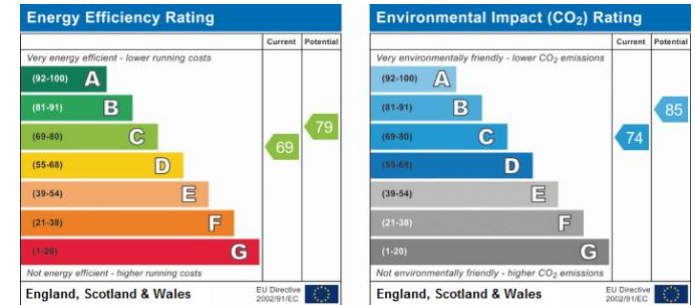
Approximate gross internal area  
33 sq m / 355 sq ft



**First Floor**

Floor Plan produced for Tavistock Bow by Mays Floorplans © . Tel 020 3397 4594  
Illustration for identification purposes only, not to scale  
All measurements are maximum, and include wardrobes and window bays where applicable

# EPC



## About Us

Tavistock Bow is an independent residential agency based in Covent Garden. We are niche, boutique, creative, knowledgeable, professional and approachable. We love what we do and that's why we do it.

## Contact Us

- a.** 31 Long Acre, London, WC2E 9LA
- t.** 020 7477 2177
- e.** hello@tavistockbow.com
- w.** tavistockbow.com

