



St Martin's Lane, Covent Garden, WC2N 4AA
£460 pw

› 1 Bedroom › 1 Bathroom › Unfurnished

TAVISTOCKBOW
RESIDENTIAL



- › One bedroom
- › One bathroom
- › First floor (walk-up)
- › Wooden floors throughout
- › Open plan kitchen
- › Unfurnished
- › Washer/dryer
- › Good storage space
- › Available early-July
- › Close to Leicester Square & Covent Garden tube stations



Situated in an ideal location on St Martins Lane, this first floor one bedroom, one bathroom flat features a bright open plan reception room, double bedroom and bathroom, with wood floors throughout and gas central heating the apartment is available early-July on an unfurnished basis.





WHAT WE LOVE:

Ideal pied-a-terre
Wood floors
In the middle of Theatreland
Moments from Covent Garden Piazza
Two mins walk from Seven Dials.

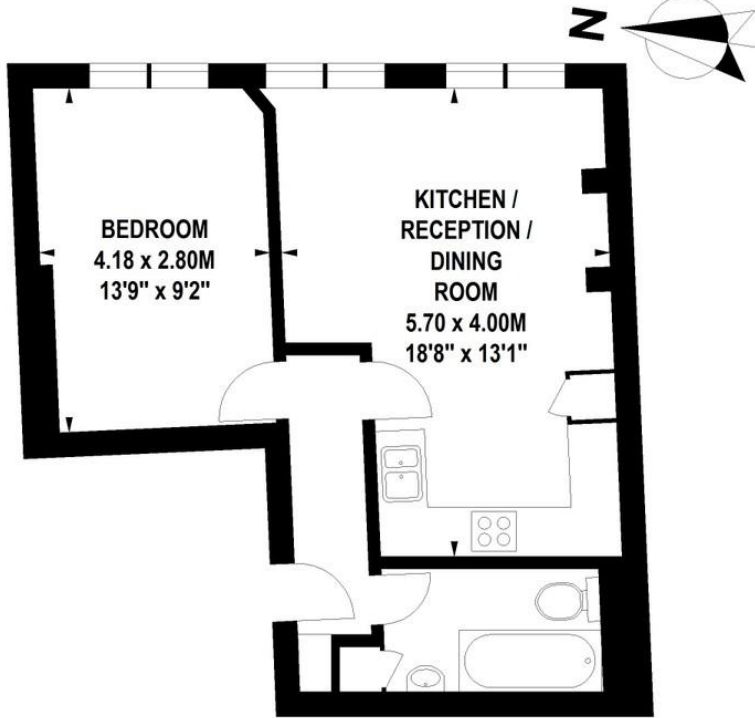
WHAT YOU NEED TO KNOW:

1st floor
Walk up
Good storage
Open plan reception room
Westminster council tax.



St. Martins Lane, WC2

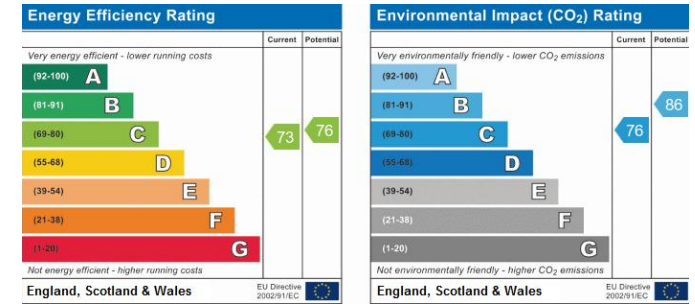
Approximate Gross Internal Area 42 sq m / 452 sq ft



First Floor

Floor Plan produced for Tavistock Bow by Mays Floorplans © . Tel 020 3397 4594
 Illustration for identification purposes only, not to scale
 All measurements are maximum, and include wardrobes and window bays where applicable

EPC



About Us

Tavistock Bow is an independent residential agency based in Covent Garden. We are niche, boutique, creative, knowledgeable, professional and approachable. We love what we do and that's why we do it.

Contact Us

- a.** 31 Long Acre, London, WC2E 9LA
- t.** 020 7477 2177
- e.** hello@tavistockbow.com
- w.** tavistockbow.com

