



Paramount House, Wardour Street, Soho, W1F 8ZX
£1,150 pw

› 3 Bedrooms › 3 Bathroom › Furnished

TAVISTOCKBOW
RESIDENTIAL



- › Three bedrooms
- › Three bathrooms (two ensuite)
- › First floor (with lift)
- › Open plan kitchen reception room
- › Wood floors
- › Furnished
- › Portered building
- › Large warehouse windows
- › Available immediately
- › Close to both Oxford Circus & Tottenham Court Road tube stations



An absolutely stunning three bedroom, three bathroom apartment within this prestigious portered block on Wardour Street. The apartment is situated on the first floor (with lift) and has been meticulously interior designed with high quality fixtures, fittings and furniture plus

solid wood floors. The flat is located on the first floor (with lift) and is available immediately. Westminster Council Tax.





WHAT WE LOVE:

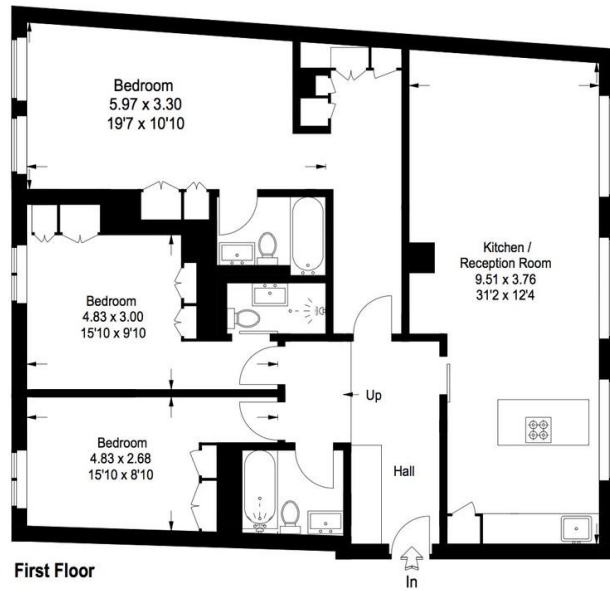
Ideal for professional sharers
Excellent quality furniture
Interior designed
Portered block
Warehouse style windows.

WHAT YOU NEED T KNOW:

1st floor (with lift)
Fantastic storage throughout
Day time porter
Modern appliances
Frippe glazing
Available immediately
Westminster Council tax



Floorplan

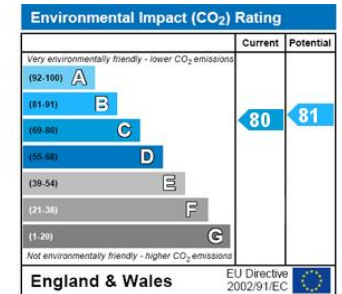
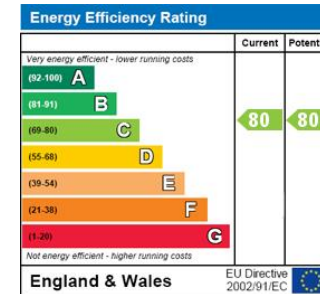


Wardour Street, W1F
 Approximate Gross Internal Area
 110 sq m / 1184 sq ft



FLOORPLANZ © 2013
 0845 6344080 Ref 114866
 This plan is for layout guidance only.
 Not drawn to scale, unless stated.
 Windows & door openings are
 approximate.
 Whilst every care is taken in the
 preparation of this plan, please
 check all dimensions, shapes &
 compass bearings before making
 any decisions reliant upon them.

EPC



About Us

Tavistock Bow is an independent residential agency based in Covent Garden. We are niche, boutique, creative, knowledgeable, professional and approachable. We love what we do and that's why we do it.

Contact Us

- a.** 31 Long Acre, London, WC2E 9LA
- t.** 020 7477 2177
- e.** hello@tavistockbow.com
- w.** tavistockbow.com

- /tavistockbow
- /tavistockbow
- @tavistockbow

