



Marshall Street, Soho, W1F 7EY
£375 pw

› Studio › 1 Bathroom › Unfurnished

TAVISTOCKBOW
RESIDENTIAL



- > Studio apartment
- > Shower Room
- > First floor (walk-up)
- > Sash windows
- > Secondary glazing
- > Unfurnished
- > Open plan kitchen
- > Moments from Carnaby Street
- > Available early August
- > Close to Oxford Circus tube stations (Central, Bakerloo & Victoria)



A modern and well finished studio flat located on the first floor (walk-up) in this ever popular Carnaby location. Overlooking Marshall Street, the studio room features large sash windows (with secondary glazing), original fireplace and a modern kitchen. The

contemporary shower room includes a storage cupboard with a washer/dryer. Available early August, unfurnished.





WHAT WE LOVE:

- Fantastic location
- The original fireplace
- Contemporary finishes
- Opposite Marshall Street Baths - a restored pool from the 1930's
- Moments from Kingly Court and all its fantastic restaurants.



WHAT YOU NEED TO KNOW:

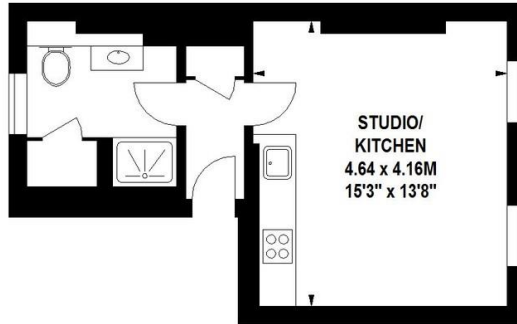
- 1st floor
- Walk up
- Open plan studio
- Fully fitted kitchen
- One of three studios in the building.

Floorplan

Marshall Street, W1

Approximate gross internal area

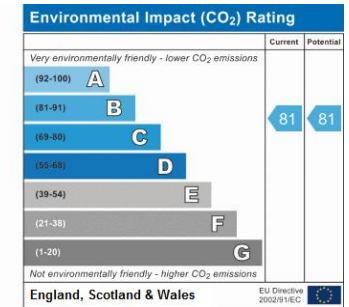
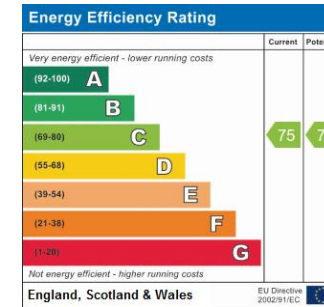
29 sq m / 312 sq ft



First Floor

Floor Plan produced for Tavistock Bow by Mays Floorplans © . Tel 020 3397 4594
 Illustration for identification purposes only, not to scale
 All measurements are maximum, and include wardrobes and window bays where applicable

EPC






About Us

Tavistock Bow is an independent residential agency based in Covent Garden. We are niche, boutique, creative, knowledgeable, professional and approachable. We love what we do and that's why we do it.

Contact Us

- a.** 31 Long Acre, London, WC2E 9LA
- t.** 020 7477 2177
- e.** hello@tavistockbow.com
- w.** tavistockbow.com

-  /tavistockbow
-  /tavistockbow
-  @tavistockbow



TAVISTOCKBOW
 RESIDENTIAL