

St Martin's Lane, Covent Garden, WC2N 4ES
£1,175 pw

› 2 Bedrooms › 2 Bathroom › Unfurnished

TAVISTOCKBOW
RESIDENTIAL



- › Two bedrooms
- › Two bathrooms
- › Fourth floor (with lift)
- › Recently refurbished
- › Walk in wardrobes
- › Unfurnished
- › Two terraces
- › Quiet location
- › Available immediately
- › Close to Leicester Square underground

› An incredible opportunity to rent a two bedroom, two bathroom penthouse duplex flat. Situated on the 4th floor (with lift) the property features a large open plan reception/kitchen which benefits from a balcony with bi-fold doors. Upstairs leads to a large terrace and downstairs leads to two large bedrooms with both featuring walk in wardrobes and en-suite bathrooms. The master bathroom features 'his and hers' sinks a classic bathtub and a dual shower stall. Available immediately, unfurnished.





WHAT WE LOVE:

Incredible roof top terrace
Moments from Covent Garden's Piazza
Close to 'Mr Foggs Tavern'
Bancone (incredible pasta restaurant) is
around the corner
Master ensuite is fabulous.

WHAT YOU NEED TO KNOW:

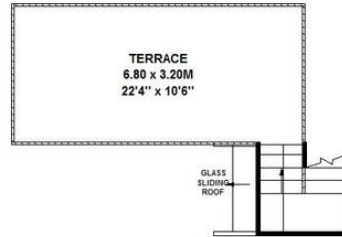
Two terraces
Amazing storage
Modern appliances
'His and her' sinks
Wood floors throughout.



Floorplan

St. Martin's Lane, WC2

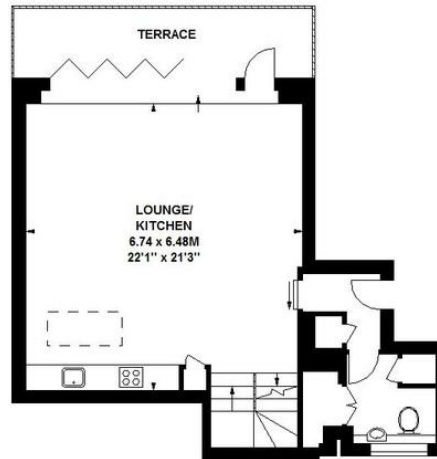
Approximate gross internal area
147 sq m / 1582 sq ft



Fifth Floor



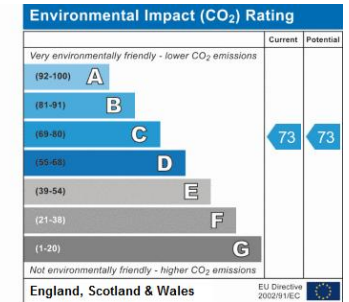
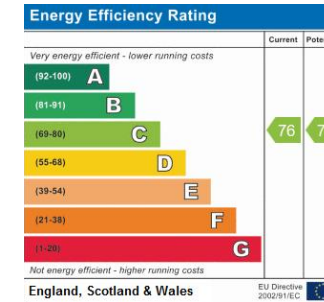
Third Floor



Fourth Floor

Floor Plan produced for Tavistock Bow by Mays Floorplans ©. Tel 020 3397 4594
Illustration for identification purposes only, not to scale
All measurements are maximum, and include wardrobes and window bays where applicable

EPC



About Us

Tavistock Bow is an independent residential agency based in Covent Garden. We are niche, boutique, creative, knowledgeable, professional and approachable. We love what we do and that's why we do it.

Contact Us

- a.** 31 Long Acre, London, WC2E 9LA
- t.** 020 7477 2177
- e.** hello@tavistockbow.com
- w.** tavistockbow.com



TAVISTOCKBOW
RESIDENTIAL