



Brewer Street, Soho
£320 pw

› Studio › 1 Bathroom › Unfurnished

TAVISTOCKBOW
RESIDENTIAL



- › Studio apartment
- › One bathroom
- › 1st floor
- › Separate kitchen
- › Double glazing
- › Unfurnished
- › Electric heating
- › Large window
- › Available mid-July
- › Close to Piccadilly Circus tube station



A studio flat to rent situated on the 1st floor in a central location in Soho. There is a good sized studio room with fitted wardrobes and a pull down bed (mattress not provided) with a separate kitchen and a white suite shower room. Available mid-July on an unfurnished basis.





WHAT WE LOVE:

- Great location
- Moments from Regent Street
- Lots of natural light
- Minutes from the fantastic Whole Foods store
- Close to Piccadilly Circus.

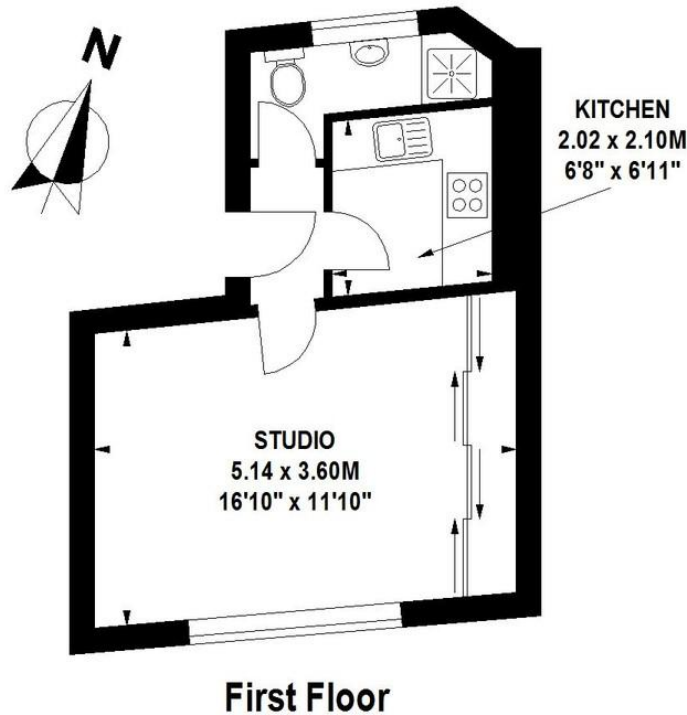
WHAT YOU NEED TO KNOW:

- Electric heating
- Wooden flooring
- Separate kitchen
- Gas hob
- Double glazing.



Brewer Street, W1

Approximate Gross Internal Area 28 sq m / 301 sq ft

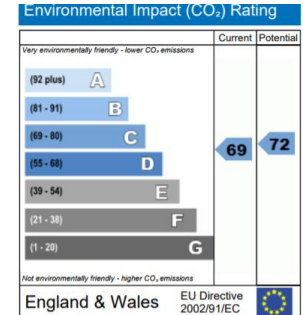
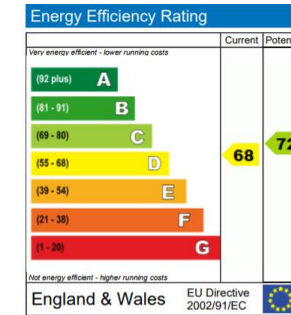


Floor Plan produced for Tavistock Bow by Mays Floorplans © . Tel 020 3397 4594

Illustration for identification purposes only, not to scale

All measurements are maximum, and include wardrobes and window bays where applicable

EPC



About Us

Tavistock Bow is an independent residential agency based in Covent Garden. We are niche, boutique, creative, knowledgeable, professional and approachable. We love what we do and that's why we do it.

Contact Us

- a.** 31 Long Acre, London, WC2E 9LA
- t.** 020 7477 2177
- e.** hello@tavistockbow.com
- w.** tavistockbow.com



TAVISTOCKBOW
RESIDENTIAL