



Bedford Street, Covent Garden, WC2E 9HP  
*£575 pw*

› 1 Bedroom    › 1 Bathroom    › Furnished

**TAVISTOCKBOW**  
RESIDENTIAL



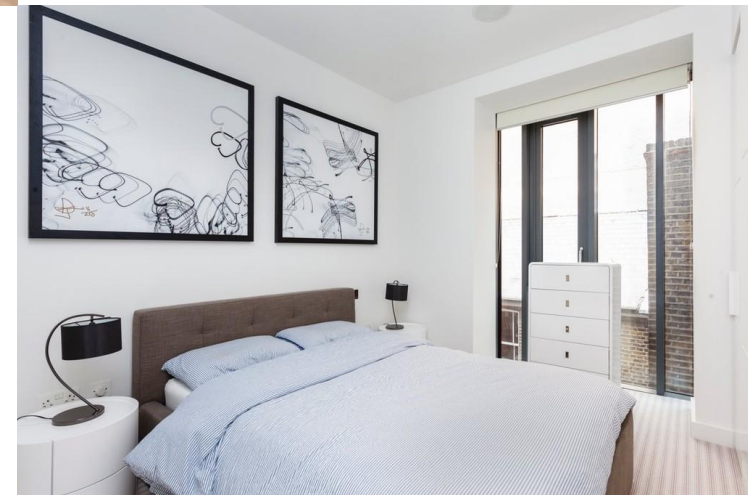
- › One double bedroom
- › Modern shower room
- › Open plan kitchen reception room
- › Wooden parquet flooring
- › Contemporary furniture
- › Fully furnished
- › Modern
- › Available from the end of June
- › Just off Covent Garden piazza
- › Close to Covent Garden, Charing Cross and Leicester Square tube stations



A fantastic one bedroom apartment on the second floor of this fabulous development in Covent Garden. The apartment has been designed to a really high specification and has a contemporary luxurious feel. There is an open plan kitchen/reception room with

oak parquet floor and carrera marble worktop. The bedroom has fitted wardrobes and there is a superb shower room. The apartment has been fully furnished with fantastic furniture. The entrance to the apartment is through a grand grade II listed building with a sweeping

staircase. There is a week day porter in the development. The apartment is available from the end of June on a fully furnished basis. Council Tax- Band H.





#### WHAT WE LOVE:

Lovely parquet wood floor  
High ceilings  
Quiet location  
Great position on Bedford Street  
Quality furniture.

#### WHAT YOU NEED TO KNOW:

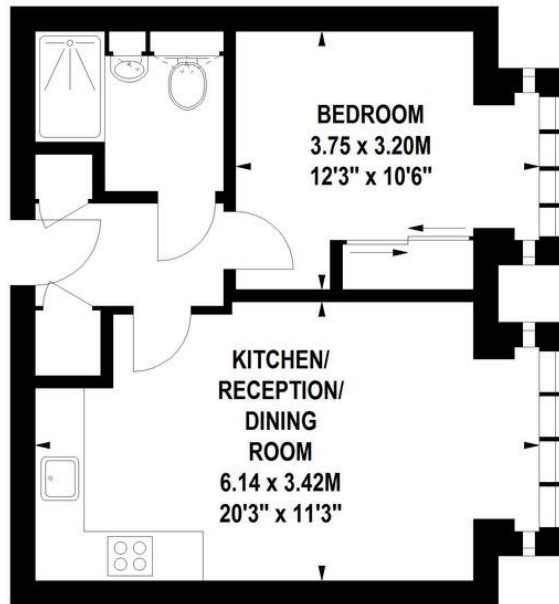
Available end of June  
Lift  
Internal outlook  
Portered block  
Close to Leicester Square tube.



## Bedford Street, WC2

Approximate gross internal area

39 sq m / 420 sq ft



### Second Floor

**BEDROOM**  
3.75 x 3.20M  
12'3" x 10'6"

**KITCHEN/  
RECEPTION/  
DINING  
ROOM**  
6.14 x 3.42M  
20'3" x 11'3"

Floor Plan produced for Tavistock Bow by Mays Floorplans © . Tel 020 3397 4594

Illustration for identification purposes only, not to scale

All measurements are maximum, and include wardrobes and window bays where applicable

## EPC

Energy Efficiency Rating		Current	Potential	Environmental (CO <sub>2</sub> ) Impact Rating		Current	Potential
Very energy efficient - lower running costs				Very environmentally friendly - lower CO <sub>2</sub> emissions			
(92-100) A				(92-100) A			
(81-91) B				(81-91) B	89	89	
(69-80) C				(69-80) C			
(55-68) D				(49-68) D			
(39-54) E				(39-54) E			
(21-38) F				(21-38) F			
(1-20) G				(1-20) G			
Not energy efficient - higher running costs				Not environmentally friendly - higher CO <sub>2</sub> emissions			
England & Wales		EU Directive 2002/91/EC		England & Wales		EU Directive 2002/91/EC	

## About Us

Tavistock Bow is an independent residential agency based in Covent Garden. We are niche, boutique, creative, knowledgeable, professional and approachable. We love what we do and that's why we do it.

## Contact Us

- a.** 31 Long Acre, London, WC2E 9LA
- t.** 020 7477 2177
- e.** hello@tavistockbow.com
- w.** tavistockbow.com



**TAVISTOCKBOW**  
RESIDENTIAL