



Great Russell Street, Bloomsbury, WC1B 3BN
£495 pw

› 1 Bedroom › 1 Bathroom › Unfurnished

TAVISTOCKBOW
RESIDENTIAL



- › Large one bedroom apartment
- › One large bathroom
- › Newly refurbished kitchen
- › Open plan kitchen reception room
- › Feature fireplace
- › Available immediately
- › Unfurnished
- › 2nd floor (walk up)
- › Lovely views to The British Museum
- › Close to both Holborn & Tottenham Court Road tube stations



A recently refurbished one bedroom flat to rent in a beautiful period building with views to both The British Museum to the front and Pied Bull Yard to the rear. The open plan kitchen / reception room has a feature fireplace, new carpets and modern newly installed kitchen.

There are three large sash windows with secondary glazing, allowing plenty of natural light. The flat is close to both Holborn & Tottenham Court Road tube stations. It is available immediately on an unfurnished basis.





WHAT WE LOVE:

- Fantastic location
- Large bedroom
- Excellent storage
- Lovely and bright
- Views to The British Museum.

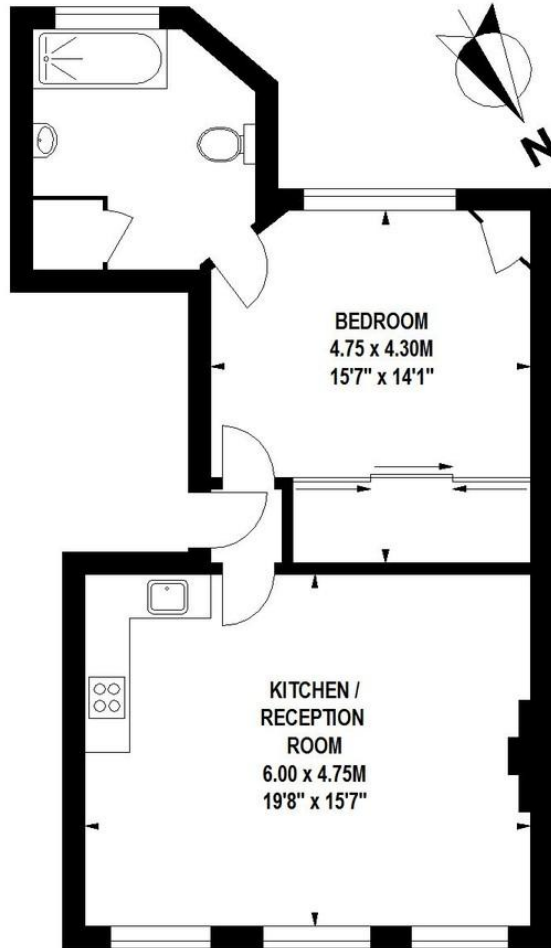
WHAT YOU NEED TO KNOW:

- 2nd floor
- Walk up
- Carpet throughout
- Large bathroom with washer dryer
- Fully fitted kitchen with new appliances.



Great Russell Street, WC1

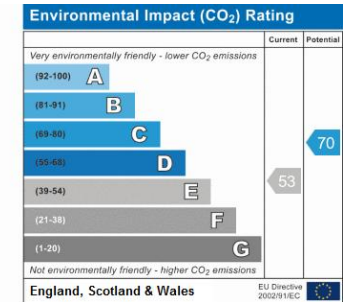
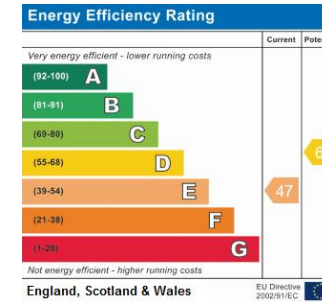
Approximate Gross Internal Area 59 sq m / 635 sq ft



Second Floor

Floor Plan produced for Tavistock Bow by Mays Floorplans © . Tel 020 3397 4594
 Illustration for identification purposes only, not to scale
 All measurements are maximum, and include wardrobes and window bays where applicable

EPC






About Us

Tavistock Bow is an independent residential agency based in Covent Garden. We are niche, boutique, creative, knowledgeable, professional and approachable. We love what we do and that's why we do it.

Contact Us

- a.** 75 Shelton Street, London, WC2H 9JQ
- t.** 020 7477 2177
- e.** hello@tavistockbow.com
- w.** tavistockbow.com

-  /tavistockbow
-  /tavistockbow
-  @tavistockbow



TAVISTOCKBOW
 RESIDENTIAL