



Gerrard Street, Chinatown, W1D 5PE  
*£395 pw*

› 1 Bedroom › 1 Bathroom › Unfurnished

**TAVISTOCKBOW**  
RESIDENTIAL



- › Double bedroom
- › Spacious living room
- › Semi-open plan fitted kitchen
- › Bathroom with bath tub
- › Good natural light
- › Unfurnished
- › 2nd floor (no lift)
- › Laminate flooring throughout
- › Available immediately
- › Close to Piccadilly Circus and Leicester Square underground stations



An excellent one-bedroom apartment situated on a 2nd floor (no lift) of a period house in the heart of Soho, and close to Leicester Square, Charing Cross and Piccadilly Circus underground stations. This light and spacious apartment comprises of a good size living

room with a semi-open plan fitted kitchen, large double bedroom and a family bathroom with a bath and shower above the bath. Available immediately on an unfurnished basis.





#### WHAT WE LOVE:

- Good value apartment
- Laminate flooring throughout
- Large bedroom
- Close proximity to popular restaurants
- Ideally positioned for Piccadilly and Leicester Square underground stations.

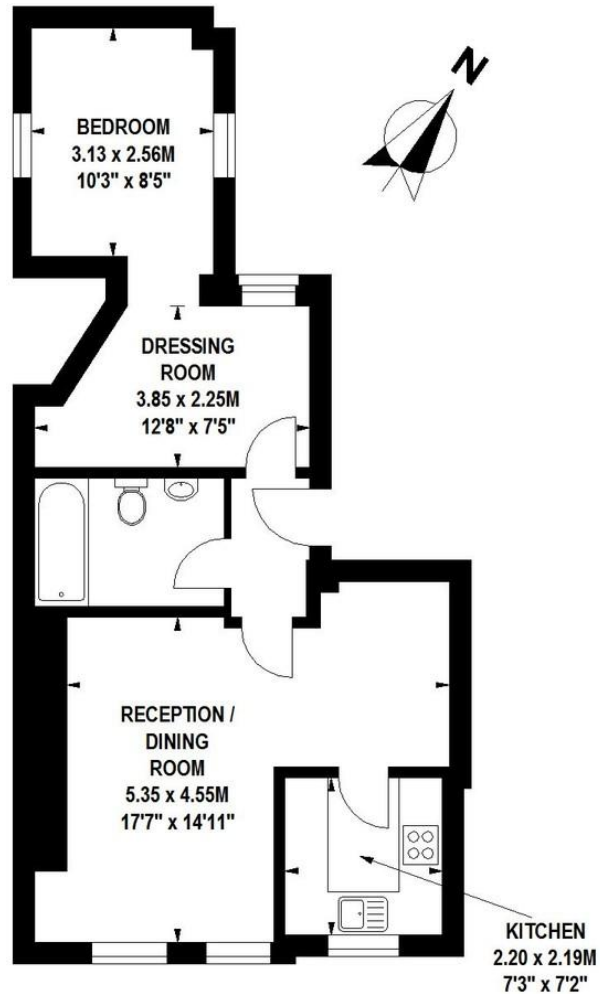
#### WHAT YOU NEED TO KNOW:

- 2nd floor (no lift)
- Secondary glazing throughout
- Restaurant fans to rear
- Westminster council tax band C
- Professionally managed.



## Gerrard Street, W1

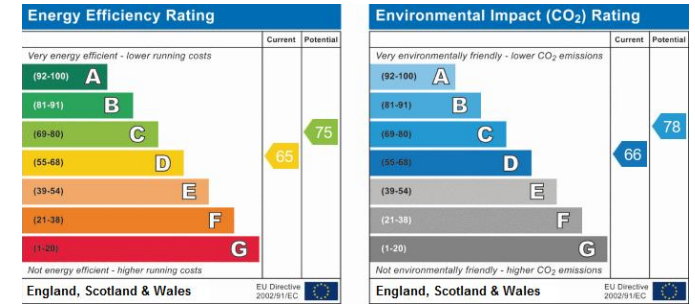
Approximate Gross Internal Area 50 sq m / 538 sq ft



**Second Floor**

Floor Plan produced for Tavistock Bow by Mays Floorplans © . Tel 020 3397 4594  
 Illustration for identification purposes only, not to scale  
 All measurements are maximum, and include wardrobes and window bays where applicable

## EPC



## About Us

Tavistock Bow is an independent residential agency based in Covent Garden. We are niche, boutique, creative, knowledgeable, professional and approachable. We love what we do and that's why we do it.

## Contact Us

- a.** 31 Long Acre, London, WC2E 9LA
- t.** 020 7477 2177
- e.** hello@tavistockbow.com
- w.** tavistockbow.com

-  /tavistockbow
-  /tavistockbow
-  @tavistockbow