



Rupert Street, Chinatown, Soho, W1D 6DD  
*£650 pw*

› 2 Bedrooms › 2 Bathroom › Unfurnished

**TAVISTOCKBOW**  
RESIDENTIAL



- › Two double bedrooms
- › Two trendy bathrooms
- › 2nd floor with lift
- › Very large living room
- › Open plan modern kitchen
- › Unfurnished
- › Wooden floors throughout
- › Secondary glazing
- › Available immediately
- › Modern apartment



If a large living space is what you are after, look no further. A refurbished two-bedroom, two-bathroom apartment to rent in Chinatown. Situated on the 2nd floor (with lift), the apartment comprises of a very large reception room with a fully fitted modern open-plan kitchen, two

double bedrooms with fitted wardrobes (master en-suite) and a further modern family bathroom. Available immediately and is unfurnished. PHOTOS INDICATIVE OF ANOTHER PROPERTY IN THE BUILDING.





### WHAT WE LOVE

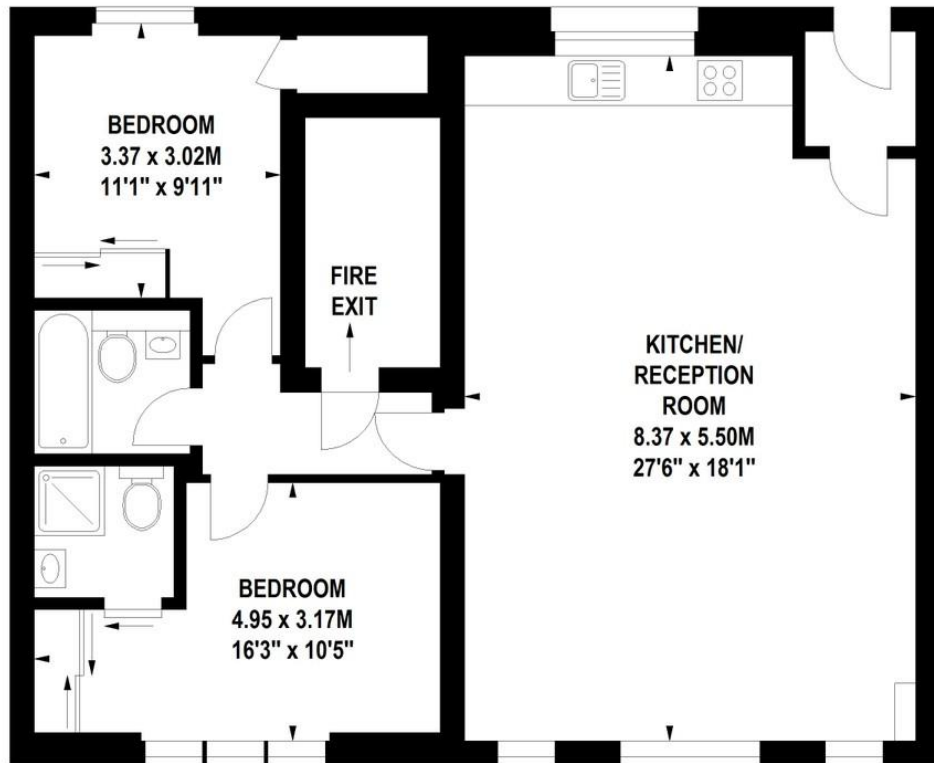
- Incredible reception room
- Arched windows
- Wooden floors
- Open plan modern kitchen
- Moments from amazing restaurants.

### WHAT YOU NEED TO KNOW

- Secondary glazing throughout
- 2nd floor (with lift)
- Dishwasher, washer dryer, ample storage space
- Westminster Council
- Closest tube is Leicester Square and Piccadilly Circus.

## Rupert Street, W1D

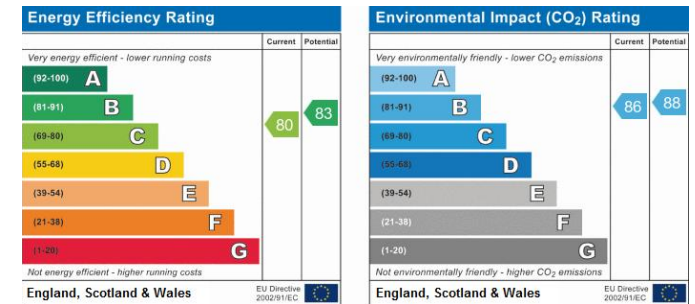
Approximate gross internal area  
83 sq m / 893 sq ft



### Second Floor

Floor Plan produced for Tavistock Bow by Mays Floorplans © . Tel 020 3397 4594  
Illustration for identification purposes only, not to scale  
All measurements are maximum, and include wardrobes and window bays where applicable

## EPC

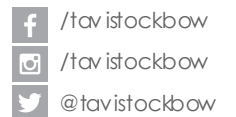


## About Us

Tavistock Bow is an independent residential agency based in Covent Garden. We are niche, boutique, creative, knowledgeable, professional and approachable. We love what we do and that's why we do it.

## Contact Us

- a.** 31 Long Acre, London, WC2E 9LA
- t.** 020 7477 2177
- e.** hello@tavistockbow.com
- w.** tavistockbow.com



**TAVISTOCKBOW**  
RESIDENTIAL