

Shaftesbury Avenue, Soho, W1D 5EQ
£975 pw

› 3 Bedrooms › 2 Bathroom › Unfurnished

TAVISTOCKBOW
RESIDENTIAL



- › Three bedrooms
- › Two shower rooms
- › Second floor (with lift)
- › Brand new
- › Wooden flooring throughout
- › Unfurnished
- › Gas hob
- › Feature fireplace
- › Available immediately
- › Close to Leicester Square and Piccadilly Circus tubes

› A beautiful brand new, three double bedroom, two shower room property to rent within a period building in Chinatown. Located on the second floor (with lift), there are wooden floors and double glazing throughout. There is a separate kitchen featuring a gas hob, washer/dryer and a larger cupboard. The reception room is a good size and all bedrooms are large doubles with fitted storage. Available immediately on an unfurnished basis.





WHAT WE LOVE:

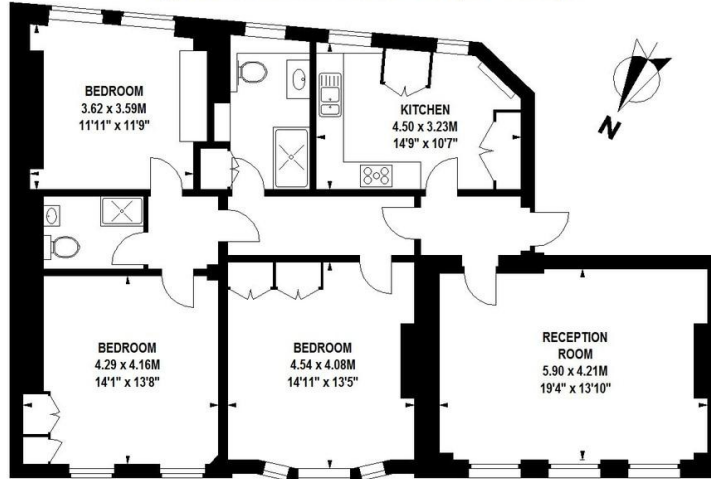
- Gas hob
- Large bedrooms
- Feature fireplace
- Wooden floors
- Amazing restaurants close by.

WHAT YOU NEED TO KNOW:

- Second floor (with lift)
- Secondary glazing
- Washer/dryer
- Separate kitchen
- Larder cupboard.

Exeter Mansions, W1

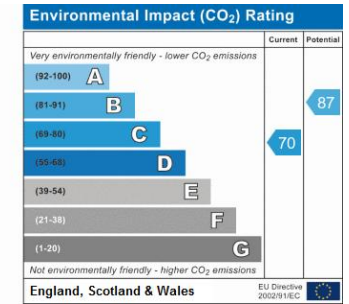
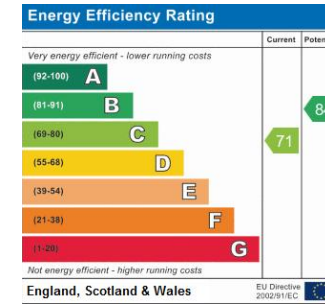
Approximate Gross Internal Area 117 sq m / 1259 sq ft



Second Floor

Floor Plan produced for Tavistock Bow by Mays Floorplans ©. Tel 020 3397 4594
 Illustration for identification purposes only, not to scale
 All measurements are maximum, and include wardrobes and window bays where applicable

EPC






About Us

Tavistock Bow is an independent residential agency based in Covent Garden. We are niche, boutique, creative, knowledgeable, professional and approachable. We love what we do and that's why we do it.

Contact Us

- a.** 31 Long Acre, London, WC2E 9LA
- t.** 020 7477 2177
- e.** hello@tavistockbow.com
- w.** tavistockbow.com

-  /tavistockbow
-  /tavistockbow
-  @tavistockbow