



SHAFTESBURY AVENUE, CHINATOWN W1
£525 PW

➤ 1 Bedroom ➤ 1 Bathroom ➤ Unfurnished

TAVISTOCKBOW
RESIDENTIAL



- One bedroom
- Shower room
- Third floor (walk-up)
- Brand new
- Wood floors throughout
- Unfurnished
- Secondary glazing
- Separate kitchen
- Available late-June
- Close to Piccadilly Circus & Leicester Square Tube stations

A fantastic, newly refurbished, third floor one bedroom apartment centrally located on Shaftesbury Avenue. The apartment is on the third floor and features wooden floors throughout, a bright reception room overlooking Shaftesbury Avenue and Macclesfield Street,

good size bedroom with a vaulted ceiling, modern shower room and a separate contemporary kitchen. Available late-June on an unfurnished basis.

Photos & floorplan are of an identical flat in the building and for indicative purposes only.





WHAT WE LOVE:

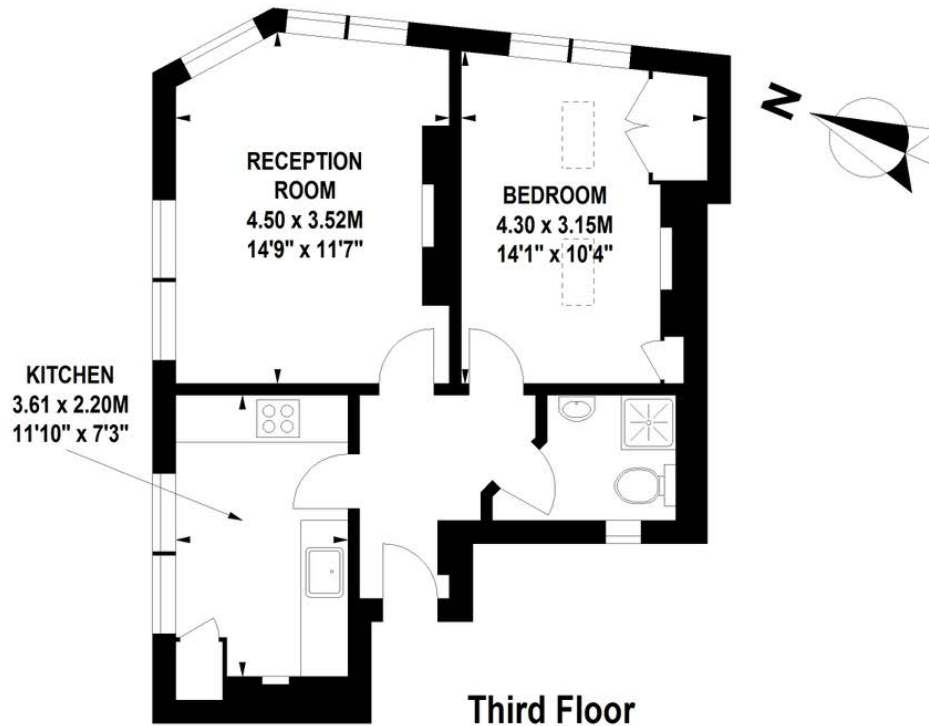
Brand new
Bright
The vaulted bedroom ceiling
Contemporary finish
Amazing location close to both Chinatown & Soho.

WHAT YOU NEED TO KNOW:

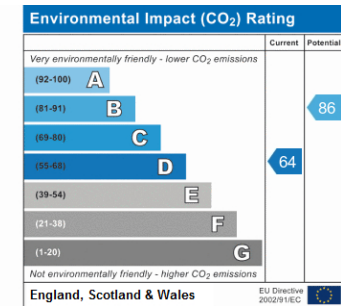
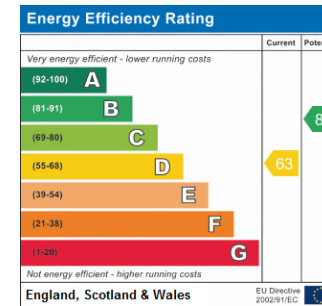
Third floor (walk up)
Wood floors throughout
Shower room (no bath)
Separate kitchen
Secondary glazing throughout.

Cooper House, W1

Approximate Gross Internal Area 44 sq m / 474 sq ft



Floor Plan produced for Tavistock Bow by Mays Floorplans © . Tel 020 3397 4594
Illustration for identification purposes only, not to scale
All measurements are maximum, and include wardrobes and window bays where applicable

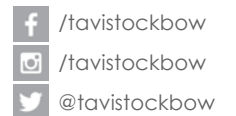


About Us

Tavistock Bow is an independent residential agency based in Covent Garden. We are niche, boutique, creative, knowledgeable, professional and approachable. We love what we do and that's why we do it.

Contact Us

- a.** 31 Long Acre, London, WC2E 9LA
- t.** 020 7477 2177
- e.** hello@tavistockbow.com
- w.** tavistockbow.com



TAVISTOCKBOW
RESIDENTIAL