



Catherine Street, Covent Garden, WC2B 5JS
£650 pw

› 2 Bedrooms › 1 Bathroom › Unfurnished

TAVISTOCKBOW
RESIDENTIAL



- › Two bedrooms
- › One shower room
- › Second floor (walk up)
- › Open plan kitchen
- › Wood floors throughout
- › Unfurnished
- › Great storage
- › Bedrooms to the rear
- › Available immediately
- › Close to Covent Garden tube

› This two bedroom apartment is located in the popular Opera Quarter area of Covent Garden in the heart of Theatreland with many fantastic restaurants on your doorstep. The modern open plan reception room has three feature windows with views to Catherine Street, there is a contemporary bathroom and two bedrooms to the rear. Available immediately on an unfurnished basis.





WHAT WE LOVE:

Seconds from Covent Gardens Piazza
Fantastic restaurants only moments away
Waterloo Bridge and the river are a short walk away
Somerset House is close by
Modern finish throughout the apartment.

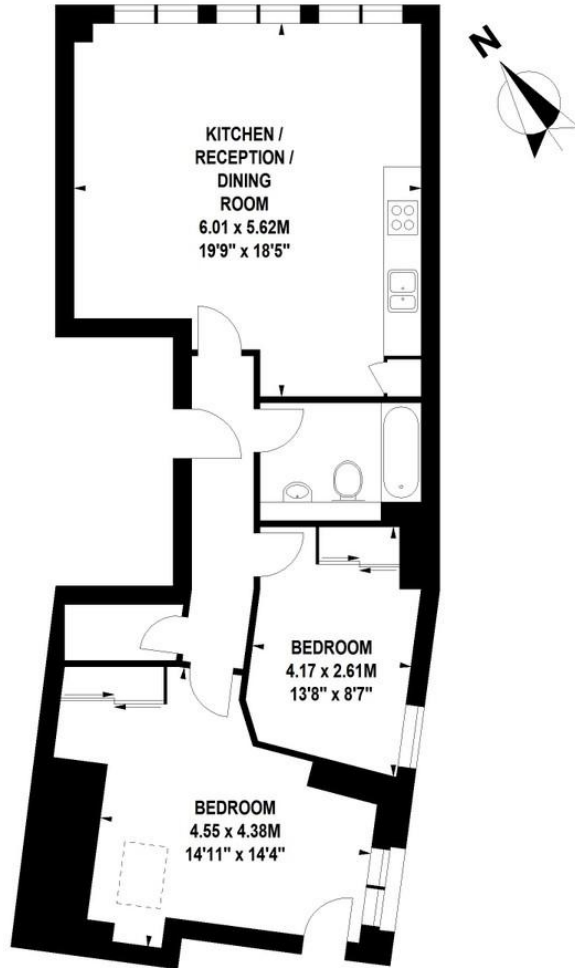
WHAT YOU NEED TO KNOW:

Second floor (walk up)
Secondary glazing
Second bedroom is a small double
Bedrooms to the rear
Open plan kitchen



Catherine Street, WC2

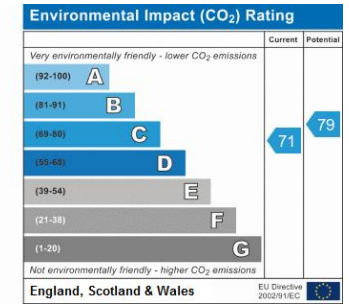
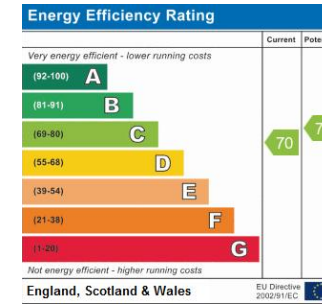
Approximate Gross Internal Area 70 sq m / 753 sq ft



Second Floor

Floor Plan produced for Tavistock Bow by Mays Floorplans © . Tel 020 3397 4594
Illustration for identification purposes only, not to scale
All measurements are maximum, and include wardrobes and window bays where applicable

EPC



About Us

Tavistock Bow is an independent residential agency based in Covent Garden. We are niche, boutique, creative, knowledgeable, professional and approachable. We love what we do and that's why we do it.

Contact Us

- a.** 31 Long Acre, London, WC2E 9LA
- t.** 020 7477 2177
- e.** hello@tavistockbow.com
- w.** tavistockbow.com

-  /tavistockbow
-  /tavistockbow
-  @tavistockbow



TAVISTOCKBOW
RESIDENTIAL