



Marshall Street, Soho, W1F 9BE
£475 pw

› 1 Bedroom › 1 Bathroom › Unfurnished

TAVISTOCKBOW
RESIDENTIAL



- › One bedroom
- › One bathroom
- › Third floor (with lift)
- › Wood floors throughout
- › Open plan kitchen/reception room
- › Unfurnished
- › Located at the rear of the building
- › Just off Carnaby Street
- › Available immediately
- › Close to Oxford Circus & Piccadilly tube



Marshall House is a popular residential building ideally located just off Carnaby Street, this one bedroom apartment is on the second floor to the rear of the building and includes a good size open plan reception room, double bedroom with good storage and bathroom.

The apartment is just over 500 sq ft (47m²) and is available from immediately on an unfurnished basis.





WHAT WE LOVE:

Fantastic location just off Carnaby Street
Golden Square is minutes away
Kingly Court and all its fantastic restaurants
are close by
Inko Nito is just opposite (fantastic Japanese
restaurant)
A short walk from the beautiful Liberty
department store.

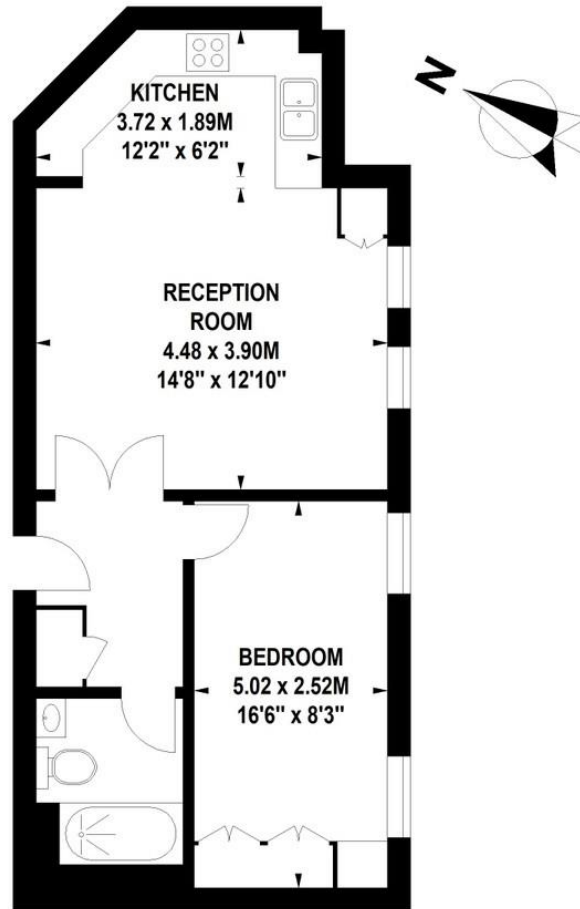


WHAT YOU NEED TO KNOW:

Third floor (with lift)
Located at the rear of the building
Wood floors throughout
24 hour security office close by
Open plan kitchen.

Marshall House, Marshall Street, W1

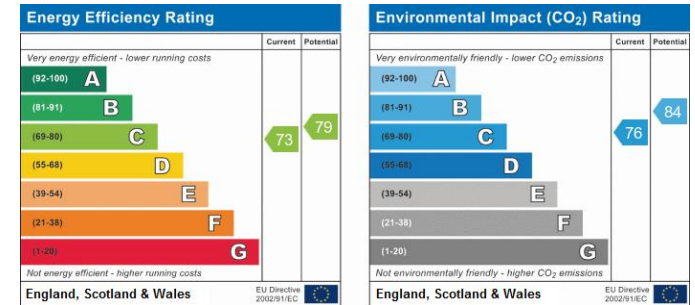
Approximate Gross Internal Area 47 sq m / 506 sq ft



Third Floor

Floor Plan produced for Tavistock Bow by Mays Floorplans © . Tel 020 3397 4594
 Illustration for identification purposes only, not to scale
 All measurements are maximum, and include wardrobes and window bays where applicable

EPC






About Us

Tavistock Bow is an independent residential agency based in Covent Garden. We are niche, boutique, creative, knowledgeable, professional and approachable. We love what we do and that's why we do it.

Contact Us

- a.** 31 Long Acre, London, WC2E 9LA
- t.** 020 7477 2177
- e.** hello@tavistockbow.com
- w.** tavistockbow.com

-  /tavistockbow
-  /tavistockbow
-  @tavistockbow



TAVISTOCKBOW
 RESIDENTIAL