



Shaftesbury Avenue, Covent Garden, WC2H 8HL
£650 pw

› 2 Bedrooms › 2 Bathroom › Unfurnished

TAVISTOCKBOW
RESIDENTIAL



- > Two bedrooms
- > Two bathrooms
- > Third floor (walk-up)
- > Open plan kitchen
- > Wood floors
- > Unfurnished
- > Secondary glazing
- > Recently refurbished
- > Available immediately (or can be end of July as there is a tenancy running until then)
- > Close to Leicester Square & Covent Garden

> A beautiful, recently refurbished, two bedroom, two bathroom apartment in a great location on Shaftesbury Avenue, the apartment has lots of natural light and includes a dual aspect open plan reception room, two double bedrooms (one en-suite) and a guest bathroom. The apartment is available immediately on an unfurnished basis.





WHAT WE LOVE:

Beautifully refurbished
Lots of natural light
Close to Sevendials and all its boutiques & restaurants
Monmouth Coffee is a short walk away
High ceilings.

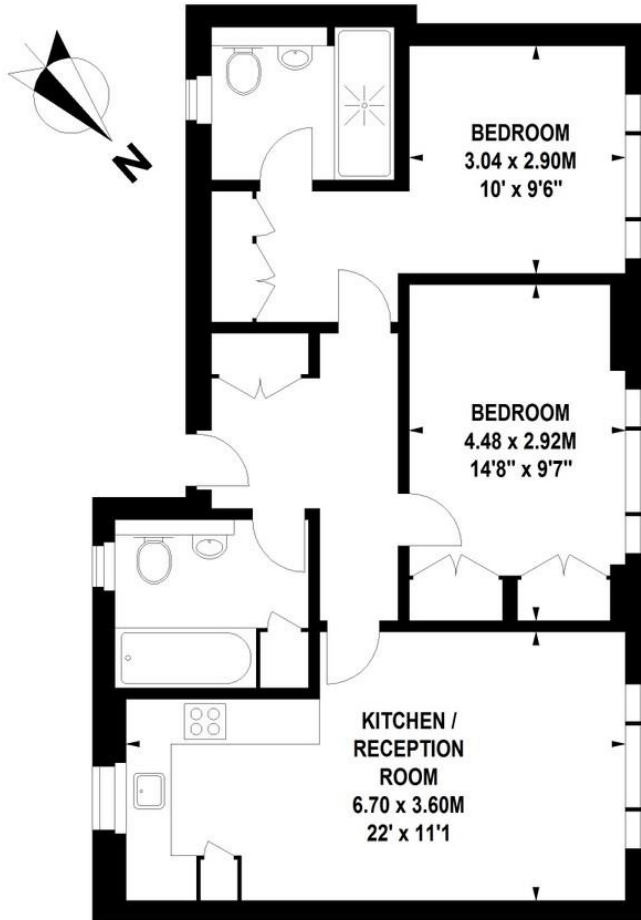


WHAT YOU NEED TO KNOW:

3rd floor (walk up)
Secondary glazed
Two double bedrooms
Open plan kitchen
Available immediately (or can be end of July as there is a tenancy running until then)

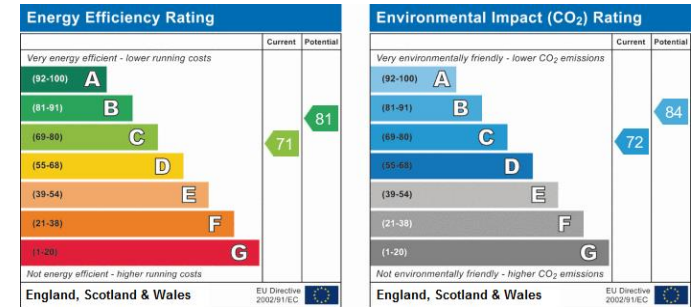
Shaftesbury Avenue, WC2

Approximate Gross Internal Area 71 sq m / 764 sq ft



Third Floor

Floor Plan produced for Tavistock Bow by Mays Floorplans © . Tel 020 3397 4594
 Illustration for identification purposes only, not to scale
 All measurements are maximum, and include wardrobes and window bays where applicable






About Us

Tavistock Bow is an independent residential agency based in Covent Garden. We are niche, boutique, creative, knowledgeable, professional and approachable. We love what we do and that's why we do it.

Contact Us

- a.** 31 Long Acre, London, WC2E 9LA
- t.** 020 7477 2177
- e.** hello@tavistockbow.com
- w.** tavistockbow.com

-  /tavistockbow
-  /tavistockbow
-  @tavistockbow