



Earlham Street, Covent Garden, WC2H 9LG  
*£375 pw*

› Studio    › 1 Bathroom    › Unfurnished

**TAVISTOCKBOW**  
RESIDENTIAL



- › Studio apartment
- › Bathroom
- › First floor (walk up)
- › Separate kitchen
- › Wood floors
- › Unfurnished
- › Fantastic location in Sevendials
- › Fitted wardrobes
- › Available immediately
- › Close to Covent Garden and Leicester Square tube stations

› A lovely first floor studio apartment ideally located in the heart of the Sevendials area of Covent Garden on Earham Street. Sevendials boasts many fantastic boutiques and restaurants, Soho and central Covent Garden are short walk away. The apartment includes a good size studio room, separate kitchen and bathroom. Available immediately on an unfurnished basis.





#### **WHAT WE LOVE:**

Amazing location in Sevendials

Fantastic coffee from Monmouth Coffee is moments away

Great Thai from Rosa's restaurant just a few doors down

Neals Yard is a short walk away

Another Space gym is just around the corner.

#### **WHAT YOU NEED TO KNOW:**

First floor (walk up)

Wood floors throughout

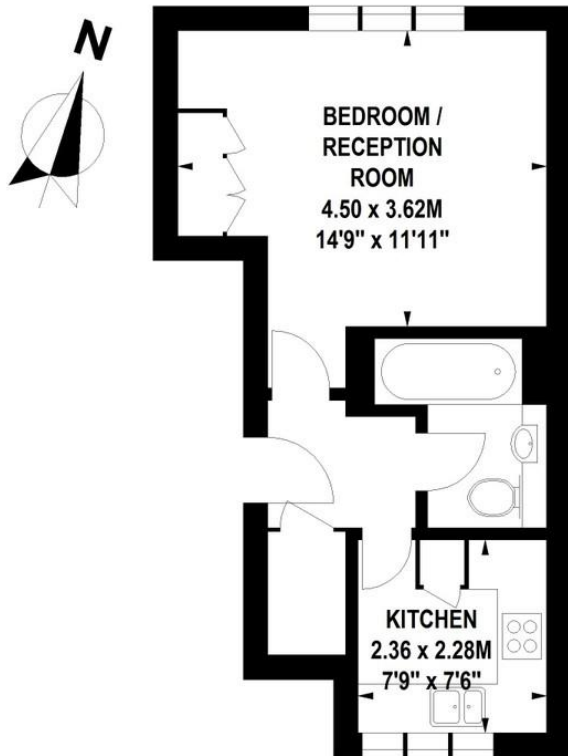
Studio room overlooks Earlham Street

Kitchen is located at the rear of the building

Fitted wardrobes in the studio room.

## Earlham Street, WC2

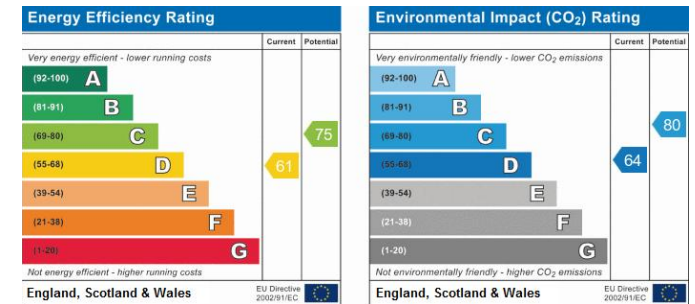
Approximate Gross Internal Area 31 sq m / 334 sq ft



First Floor

Floor Plan produced for Tavistock Bow by Mays Floorplans © . Tel 020 3397 4594  
Illustration for identification purposes only, not to scale  
All measurements are maximum, and include wardrobes and window bays where applicable

## EPC



## About Us

Tavistock Bow is an independent residential agency based in Covent Garden. We are niche, boutique, creative, knowledgeable, professional and approachable. We love what we do and that's why we do it.

## Contact Us

- a.** 31 Long Acre, London, WC2E 9LA
- t.** 020 7477 2177
- e.** hello@tavistockbow.com
- w.** tavistockbow.com

-  /tavistockbow
-  /tavistockbow
-  @tavistockbow