



St Martin's Lane, Covent Garden, WC2N 4ES  
*£675 pw*

› 1 Bedroom    › 1 Bathroom    › Unfurnished

**TAVISTOCKBOW**  
RESIDENTIAL



- › One double bedroom
- › One bathroom
- › Open plan kitchen reception room
- › Private terrace
- › Recently refurbished
- › Unfurnished
- › Available now
- › Top floor (with lift)
- › Moments from the Coliseum Theatre
- › Close to Leicester Square tube

› An exceptionally well sized and recently refurbished one bedroom flat in Covent Garden, with a private roof terrace. Situated on the 4th floor (with lift). The fully fitted contemporary kitchen is open plan to the large reception room. There is double bedroom benefiting from fitted storage and modern bathroom shower over bath. The flat is available immediately on an unfurnished basis.







#### **WHAT WE LOVE:**

- Private terrace
- Sleek modern kitchen
- Cast iron radiators
- Interior designed throughout
- Close to St Martins Courtyard.

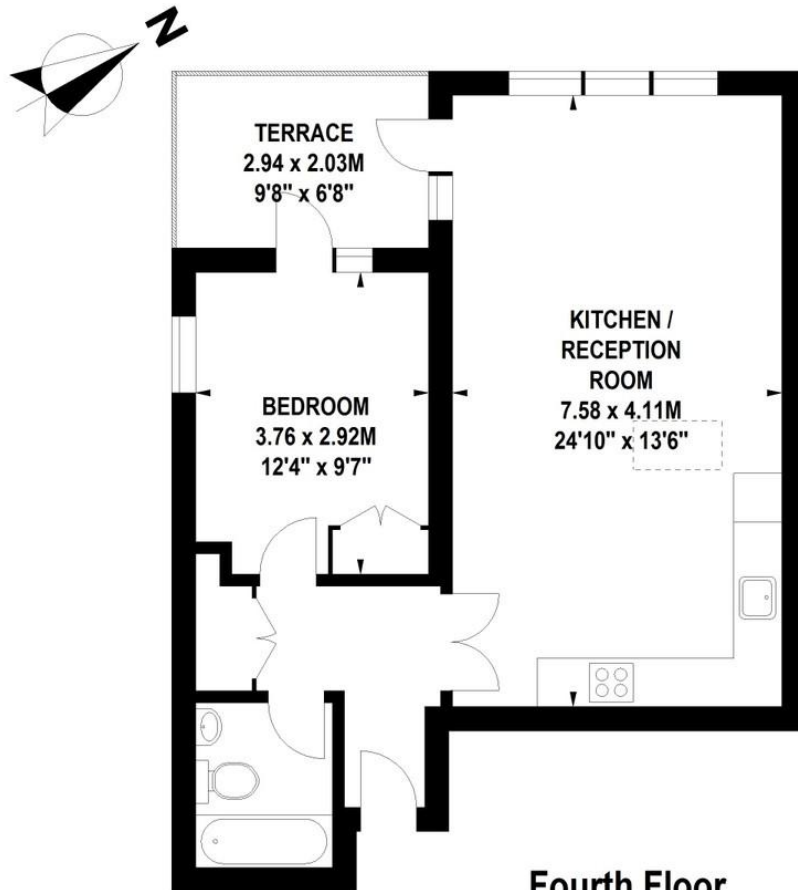
#### **WHAT YOU NEED TO KNOW:**

- 4th floor with lift access
- Video entry system
- Secondary glazing
- Located at rear of building
- Separate bathtub and shower stall.



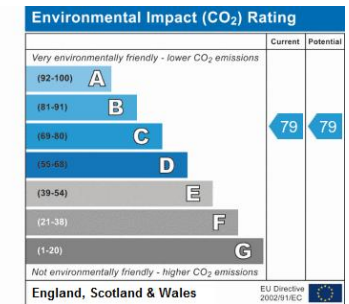
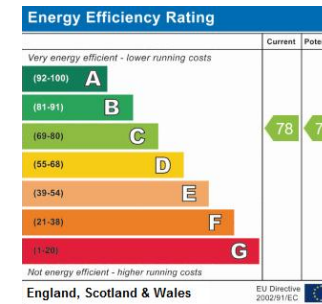
## St. Martins Lane, WC2

Approximate Gross Internal Area 53 sq m / 571 sq ft



Floor Plan produced For Tavistock Bow by Mays Floorplans © . Tel 020 3397 4594  
Illustration for identification purposes only, not to scale  
All measurements are maximum, and include wardrobes and window bays where applicable

## EPC



## About Us

Tavistock Bow is an independent residential agency based in Covent Garden. We are niche, boutique, creative, knowledgeable, professional and approachable. We love what we do and that's why we do it.

## Contact Us

- a.** 31 Long Acre, London, WC2E 9LA
- t.** 020 7477 2177
- e.** hello@tavistockbow.com
- w.** tavistockbow.com

-  /tavistockbow
-  /tavistockbow
-  @tavistockbow



**TAVISTOCKBOW**  
RESIDENTIAL